



Philips 8100 series
4K UHD LED Android TV

139 cm (55")

Major HDR formats supported
DTMB



55PUD8125

4K UHD LED Android TV

Family movie night. The big game. Whatever the occasion, settle down to superb picture quality and great sound. This TV makes all your content look great,

Slim TV. Beautiful light.

- Bright 4K LED TV. Vibrant HDR picture. Smooth motion.

Android TV-content at your command

- Android TV. Simply smart.
- Google Assistant. Control the TV with your voice.

Smooth motion. Real color. Incredible depth.

- Dolby Vision and Dolby Atmos. Cinematic vision and sound.
- HDR10+ supported. See more of what the director intended.

A TV that's more than Smart, it's beautiful

- Borderless design. Another Philips ingenious invention.

Crisp sound. Hear every word.

- Well-balanced audio. Crisp, clear dialogue. Punchy effects.

PHILIPS

Highlights

4K UHD



Bright 4K LED TV. Vibrant HDR picture. Smooth motion. A Philips 4K UHD TV brings content to life with rich colors and crisp contrast. Images have more depth, and motion is smooth. Movies, shows, games, and more look great no matter the source.

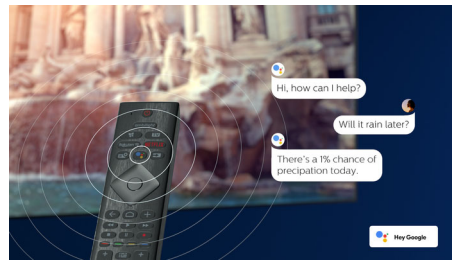
Android TV

Make your Philips Android TV your own. If it's all about Amazon and YouTube this week, and Netflix next week-no problem. A clear, intuitive interface lets you put the content you love front and center. Easily pick up where you left off in the latest series, or check out the new movie releases.

Dolby Vision and Dolby Atmos

Support for Dolby's premium sound and video formats means the HDR content you watch will look-and sound-gloriously real. Whether it's the latest streaming series or a Blu-Ray disc set, you'll enjoy contrast, brightness, and color that reflect the director's original intentions. And hear spacious sound with clarity, detail, and depth.

Google Assistant



Control your Philips Android TV with your voice. Want to play a game, watch Netflix, or find content and apps in the Google Play store? Just tell your TV. You can even command all Google Assistant-compatible smart home devices-like dimming the lights and setting the thermostat on movie night. Without leaving the sofa.

HDR10+ supported

Your Philips TV is primed to get the most out of the HDR10+ video format. Contrast, color, and brightness levels are adjusted from frame to frame. Whether it's a must-watch series or the new blockbuster, shadows will be deeper. Bright surfaces will shine. Colors will be truer.

Borderless design

Another Philips ingenious invention, bringing you Philips borderless design TV. Now, you can see more screen images till the edge of your screen, without feeling bothered by a black frame around the TV. A true genuine art masterpiece that now you can really own in your room. This TV is beautiful and minimally invasive. It transcends beyond time and will definitely blends intricately with your modern interior.

Specifications

Picture/Display

- Display: 4K Ultra HD LED
- Panel resolution: 3840x2160
- Aspect ratio: 16:9
- Picture enhancement: Ultra Resolution

Supported Display Resolution

- Computer inputs on all HDMI: HDR supported, HDR10/ HLG, up to 4K UHD 3840x2160 @60Hz
- Video inputs on all HDMI: up to 4K UHD 3840x2160 @60Hz, HDR10/HLG (Hybrid Log Gamma), HDR10+/Dolby Vision

Android TV

- Pre-installed apps: Google Play Movies*, Google Play Music*, Google Search, YouTube, Netflix
- Memory size to install apps: 4GB

Smart TV Features

- User Interaction: SimplyShare
- Ease of Installation: Network installation wizard, Settings assistant wizard
- Ease of Use: One-stop smart menu button, Onscreen usermanual
- Firmware upgradeable: Firmware auto upgrade wizard, Firmware upgradeable via USB, Online firmware upgrade
- Screen Format Adjustments: Basic - Fill Screen, Fit to screen, Advance - Shift, Zoom, stretch

Processing

- Processing Power: Quad Core

Tuner/Reception/Transmission

- HEVC support
- Digital TV: DTMB
- MPEG Support: MPEG2, MPEG4
- Video Playback: NTSC, PAL, SECAM
- TV Program guide*: 8 day Electronic Program Guide
- Signal strength indication

Connectivity

- Number of HDMI connections: 4
- Number of USBs: 2
- Wireless connections: Wi-Fi 802.11n, 2x2, Dual band, Bluetooth
- Other connections: Digital audio out (optical), Ethernet-LAN RJ-45, Headphone out

- HDMI features: 4K, Audio Return Channel
- EasyLink (HDMI-CEC): Remote control pass-through, System audio control, System standby, One touch play
- HDCP 2.2: Yes on all HDMI

Multimedia Applications

- Video Playback Formats: Containers: AVI, MKV, H264/MPEG-4 AVC, MPEG-1, MPEG-2, MPEG-4, HEVC (H.265), VP9
- Subtitles Formats Support: .SRT, .SUB, .TXT, .SMI
- Music Playback Formats: AAC, MP3, WAV, WMA (v2 up to v9.2), WMA-PRO (v9 and v10)
- Picture Playback Formats: JPEG, BMP, GIF, PNG, 360 photo, HEIF

Power

- Mains power: AC 220 - 240 V 50/60Hz
- Ambient temperature: 5 °C to 35 °C
- Power Saving Features: Auto switch-off timer, Picture mute (for radio)

Sound

- Output power (RMS): 16W
- Sound Enhancement: Auto Volume Leveler, Dolby Atmos, Clear Sound, Smart Sound
- Speaker configuration: 8Wx2 full range speaker

Dimensions

- Box dimensions (W x H x D): 1360 x 860 x 160 mm
- Set dimensions (W x H x D): 1226.8 x 719 x 86.4 mm
- Set dimensions with stand (W x H x D): 1226.8 x 780 x 275.4 mm
- Product weight: 11.5 kg
- Product weight (+stand): 11.8 kg
- Weight incl. Packaging: 17.2 kg
- VESA wall mount compatible: 200 x 200 mm

Accessories

- Included accessories: Remote Control, Quick start guide, Legal and safety brochure, Power cord, Table top stand
- Included batteries: 2 x AAA Batteries

Smart TV

- SmartTV apps*: Netflix, YouTube

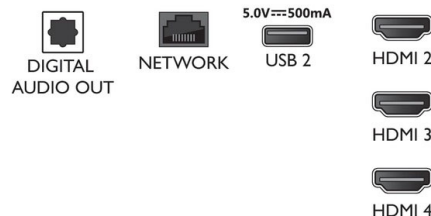


Connections

Side



Down



Issue date 2021-07-14

Version: 5.0.1

12 NC: 8670 001 75872
EAN: 87 18863 02934 3

© 2021 Koninklijke Philips N.V.
All Rights reserved.

Specifications are subject to change without notice. Trademarks are the property of Koninklijke Philips N.V. or their respective owners.

www.philips.com

- * EPG and actual visibility (up to 8 days) is country and operator dependent.
- * Smart TV app offerings vary per TV model and country. For more details please visit: www.philips.com/smarttv.
- * Please note that your Amazon Apps may not always be available in your country. (Currently Amazon apps works only in UK, Germany, Austria)
- * Its functionality is subject to ChromeCast built-in apps and smart devices. For more details, please visit ChromeCast built-in product pages.
- * Netflix subscription required. Subject to terms at <https://www.netflix.com>
- * Google Assistant is available on Philips Android TVs running on Android O (8) or higher OS version. GA is available in selected languages and countries. Supported language/countries list is going to be expanded overtime. For latest language and countries support list please contact our consumer care.
- * Image depicted on the website are non-contractual pictures. Please always refer to the actual TV that are sold in the retail or stores.
- * Due to the transmission limitations of Bluetooth wireless technology, a slight sound delay might occur when you hear audio from your bluetooth headphone or bluetooth speakers. When this occur, you might see the character moving his or her mouth but there is a slight delay in spoken dialog accompany