

Philips OLED 9 series  
4K UHD Android TV -  
Bowers&Wilkins Sound  
with Ambilight 4-sided

P5 AI dual picture engine

Sound by Bowers & Wilkins  
Ambilight 4-sided  
139 cm (55") Android TV



55OLED935

## Breathtaking picture. Cinematic sound.

### 4K UHD OLED Android TV

Give your movies the TV they deserve. This stunning Philips OLED+ TV boasts up-firing Bowers & Wilkins speakers, and the latest P5 picture processing with AI. You get a lifelike picture and thrilling sound with crystal-clear dialogue.

#### Designed to thrill.

- Philips OLED+ TV with HDR. The difference is real.
- The magic of Ambilight. Only from Philips.
- Immersive sound. Bowers & Wilkins meets Dolby Atmos.
- Kvadrat speaker cloth. Muirhead leather-backed remote

#### Incredible picture. Bowers & Wilkins sound.

- P5 engine with AI. Whatever you watch, a picture so real.
- Dolby Vision and Dolby Atmos. Cinematic vision and sound.
- 3.1.2 sound system. Up-firing speakers for Dolby Atmos.
- Integrated sub-woofer and full-range drivers.
- Separate central tweeter for pristine dialogue.

#### Content at your command.

- Voice control. Google Assistant built-in. Works with Alexa.
- DTS Play-Fi. Multi-room audio.
- Android TV. Simply smart.

# PHILIPS

4K UHD Android TV - Bowers&Wilkins Sound

P5 AI dual picture engine Sound by Bowers & Wilkins, Ambilight 4-sided, 139 cm (55") Android TV

# Highlights

## P5 engine with AI



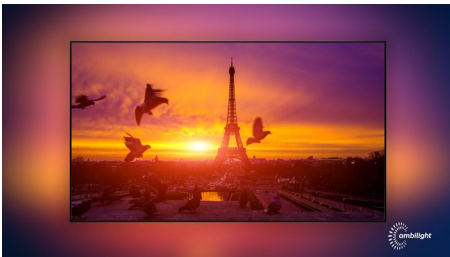
Philips P5 processor with AI dual picture engine delivers a picture so real it feels like you could step right into it. A deep-learning AI algorithm processes images in a manner similar to the human brain. No matter what you're watching, you get lifelike detail and contrast, rich color, and smooth motion.

## Sound by Bowers & Wilkins



An exclusive speaker design by legendary audio engineers Bowers & Wilkins delivers thrillingly lifelike performance. Up-firing speakers let you get the most out of Dolby Atmos. A central tweeter keeps the dialogue pristine no matter how intense the drama gets.

## Ambilight 4-sided



With Philips 4-sided Ambilight, every moment feels closer. Intelligent LEDs around the edge

of the TV respond to the on-screen action and emit an immersive glow that's simply captivating. Experience it once and wonder how you enjoyed TV without it.

## Philips OLED+ TV

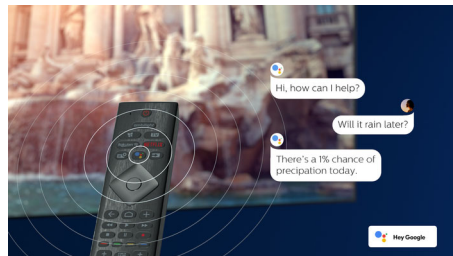
# OLED+

A Philips 4K UHD OLED+ TV is compatible with all major HDR formats. Whether it's a must-watch series or the latest video game, shadows will be deeper. Bright surfaces will shine. Colors will be truer. Motion is incredibly smooth.

## Tactile harmony

Premium materials make all the difference to your Philips TV. Kvadrat's acoustically transparent wool-blend speaker fabric allows the sound to flow freely into the room. Responsibly sourced Muirhead leather and backlit keys add a sophisticated finish to the remote control.

## Voice assistant

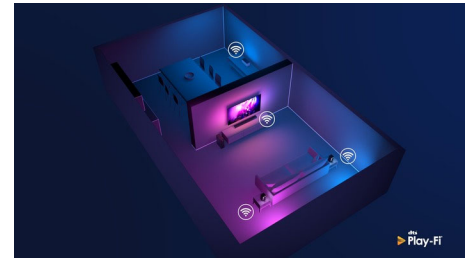


Control your Philips Android TV with your voice. Want to play a game, watch Netflix, or find content and apps in the Google Play store? Just tell your TV. You can even command all Google Assistant-compatible smart home devices, like dimming the lights and setting the thermostat on movie night. Without leaving the sofa. The days of searching for the TV

55OLED935/56

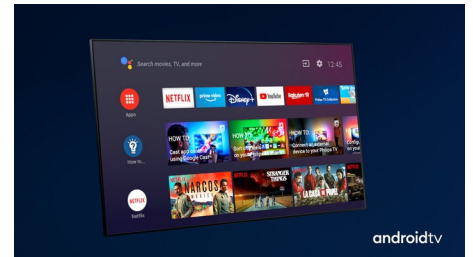
remote are over. Now you can use your voice to control your Philips smart TV via Alexa-enabled devices, like Amazon Echo. Turn your TV on, change the channel, switch to your gaming console and more with Alexa.

## DTS Play-Fi



With DTS Play-Fi on your Philips TV you can connect to compatible speakers in any room. Got wireless speakers in the kitchen? Listen to the movie while you make a snack, or keep up with the sports commentary while you get everyone a drink.

## Android TV



Your Philips Android TV gives you the content you want-when you want it. You can customize the home screen to display your favorite apps, making it simple to start streaming the movies and shows you love. Or pick up where you left off.



OLED+

Sound by  
Bowers & Wilkins

P AI Intelligent  
Dual Picture Engine

ULTRAHD™  
PREMIUM

Dolby Vision Atmos

androidtv

Ok Google

# Specifications

## Ambilight

- Ambilight Version: 4-sided
- Ambilight Features: Built in Ambilight+hue, Ambilight Music, Game Mode, Wall colour adaptive, Lounge mode, AmbiSleep, Sunrise Alarm

## Picture/Display

- Display: 4K Ultra HD OLED
- Panel resolution: 3840x2160
- Aspect ratio: 16:9
- Pixel engine: P5 AI Perfect Picture Engine
- Picture enhancement: Ultra Resolution, Wide Color Gamut 99% DCI/P3, Dolby Vision, Perfect Natural Motion, Super Resolution

## Supported Display Resolution

- Computer inputs on all HDMI: up to 4K UHD 3840x2160 @60Hz, HDR supported, HDR10+/HLG, HDR supported, HDR10/ HLG
- Video inputs on all HDMI: up to 4K UHD 3840x2160 @60Hz, HDR supported, HDR10/ HLG (Hybrid Log Gamma), HDR10+/Dolby Vision

## Android TV

- OS: Android TV™ 9 (Pie)
- Pre-installed apps: Google Play Movies\*, Google Play Music\*, Google Search, YouTube, BBC iplayer, Netflix, Amazon Prime Video
- Memory size(Flash): 16GB\*

## Smart TV Features

- Program: Pause TV, USB recording\*
- Ease of Installation: Auto detect Philips devices, Device connection wizard, Network installation wizard, Settings assistant wizard
- Ease of Use: One-stop smart menu button, Onscreen usermanual
- Firmware upgradeable: Firmware auto upgrade wizard, Firmware upgradeable via USB, Online firmware upgrade
- Screen Format Adjustments: Basic - Fill Screen, Fit to screen, Advance - Shift, Zoom, stretch, Wide screen
- Remote Control: with Voice, with Key light
- User Interaction: SimplyShare
- Voice assistant\*: Google Assistant built-in, RC with Mic., Works with Alexa

## Processing

- Processing Power: Quad Core

## Tuner/Reception/Transmission

- HEVC support
- Digital TV: DVB-T/T2
- MPEG Support: MPEG2, MPEG4
- Video Playback: PAL, SECAM
- TV Program guide\*: 8 day Electronic Program Guide
- Signal strength indication
- Teletext: 1000 page Hypertext

## Connectivity

- Number of HDMI connections: 4
- Number of USBs: 2
- Wireless connections: Bluetooth 4.2, Wi-Fi 802.11ac, 2x2, Dual band
- Other connections: Digital audio out (optical), Ethernet-LAN RJ-45, Headphone out
- HDMI features: 4K, Audio Return Channel
- EasyLink (HDMI-CEC): Remote control pass-through, System audio control, System standby, One touch play
- HDCP 2.3: Yes on all HDMI

## Multimedia Applications

- Video Playback Formats: Containers: AVI, MKV, H264/MPEG-4 AVC, MPEG-1, MPEG-2, MPEG-4, WMV9/VC1, VP9, HEVC (H.265)
- Subtitles Formats Support: .SRT, .SUB, .TXT, .SMI
- Music Playback Formats: AAC, MP3, WAV, WMA (v2 up to v9.2), WMA-PRO (v9 and v10)
- Picture Playback Formats: JPEG, BMP, GIF, PNG, 360 photo, HEIF

## Power

- Mains power: AC 220 - 240 V 50/60Hz
- Standby power consumption: <0.3W
- Ambient temperature: 5 °C to 35 °C
- Power Saving Features: Auto switch-off timer, Light sensor, Picture mute (for radio), Eco mode

## Sound

- Audio: Sound by Bowers & Wilkins, 3.1.2 Channel, Output power : 70 Watt (RMS)
- Codec: AC-4, Dolby Atmos, Dolby Digital MS12 V2.3, DTS-HD(M6)
- Speaker configuration: 10W x2, 5W x1, woofer 20W, height 12.5W x2
- Sound Enhancement: 5 Band Equalizer, A.I. Sound, Clear Dialogue, Dolby Atmos, Dolby Bass Enhancement, Dolby Volume Leveler, Night mode,

Auto Volume Leveler, Bass Enhancement

## Dimensions

- Box dimensions (W x H x D): 1400.0 x 953.0 x 174.0 mm
- Set dimensions (W x H x D): 1227.8 x 705.6 x 49.3 mm
- Set dimensions with stand (W x H x D): 1227.8 x 805.5 x 260.7 mm
- Product weight: 21.0 kg
- Product weight (+stand): 28.1 kg
- Weight incl. Packaging: 32.7 kg
- VESA wall mount compatible: 300 x 300 mm

## Accessories

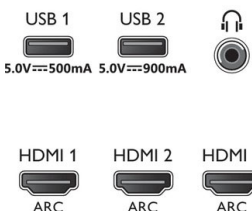
- Included Accessories: Legal and safety brochure, Power cord, Quick start guide (x1), Stand with sound solution, 2 x AAA Batteries, Remote Control

## EU Energy card

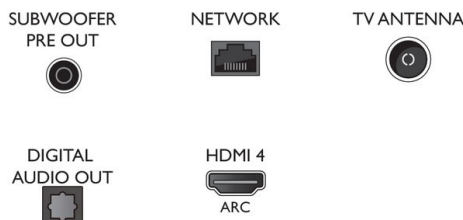
- Panel technology used: OLED

## Connections

### Side



### Bottom



Issue date 2021-10-07

Version: 6.0.1

12 NC: 8670 001 74981  
EAN: 87 18863 02892 6

© 2021 Koninklijke Philips N.V.  
All Rights reserved.

Specifications are subject to change without notice.  
Trademarks are the property of Koninklijke Philips N.V.  
or their respective owners.

[www.philips.com](http://www.philips.com)

\* EPG and actual visibility (up to 8 days) is country and operator dependent.  
\* Android App offerings vary per country. For more details please visit your local Google Play Store.  
\* Philips TV Remote app and related functionalities vary per TV model, operator, and country, as well as smart device model and OS. For more details please visit: [www.philips.com/TVRemoteapp](http://www.philips.com/TVRemoteapp).  
\* Smart TV app offerings vary per TV model and country. For more details please visit: [www.philips.com/smarttv](http://www.philips.com/smarttv).  
\* Its functionality is subject to ChromeCast built-in apps and smart devices. For more details, please visit ChromeCast built-in product pages.  
\* Memory size (Flash) : 16G, the actual available disc space may differ (dependant on e.g. (pre-)installed apps, installed operating system, etc.)  
\* Image depicted on the website are non-contractual pictures. Please always refer to the actual TV that are sold in the retail or stores.