

Register your product and get support at
www.philips.com/welcome

6452 series

PHILIPS



English – Read the safety instructions.

Български - Прочетете инструкциите за безопасност.

Čeština – Přečtěte si bezpečnostní pokyny.

Hrvatski – Pročitajte sigurnosne upute.

Dansk – Læs sikkerhedsforskrifterne.

Deutsch – Lesen Sie die Sicherheitshinweise.

Ελληνικά - Διαβάστε τις οδηγίες ασφαλείας.

Eesti – Lugege ohutusnõudeid.

Español – Lea las instrucciones de seguridad.

Français – Lisez les consignes de sécurité.

Gaeilge – Léigh na treoracha sábháilteachta.

Bahasa Indonesia – Baca petunjuk keselamatan.

Italiano – Leggere le istruzioni di sicurezza.

Казакша – Қорғаныстық нұсқаулар.

Latviešu – Izlasiet drošības norādījumus.

Lietuvių – Perskaitykite saugos instrukcijas.

Македонски – Прочитајте ги безбедносните инструкции.

Magyar – Olvassa el a biztonsági utasításokat.

Bahasa Malaysia – Baca arahan keselamatan.

Nederlands – Lees de veiligheidsvoorschriften.

Norsk – Les sikkerhetsforskriftene.

Polski – Zapoznaj się z instrukcjami bezpieczeństwa.

Português – Leia as instruções de segurança.

Română – Citiți instrucțiunile de siguranță.

Русский – Читайте инструкции по технике безопасности.

Srpski – Pročitajte bezbednosna uputstva.

Slovenščina – Preberite varnostna navodila.

Slovenský – Prečítajte si bezpečnostné pokyny.

Suomi – Lue turvaohjeet.

Svenska – Läs säkerhetsinstruktionerna.

ภาษาไทย – โปรดอ่านคำแนะนำด้านความปลอดภัย

Türkçe – Güvenlik talimatlarını okuyun.

Українська – Читайте інструкції з техніки безпеки.

Кыргызча – Коопсуздук техникасы боюнча нускаманы окуңуз.

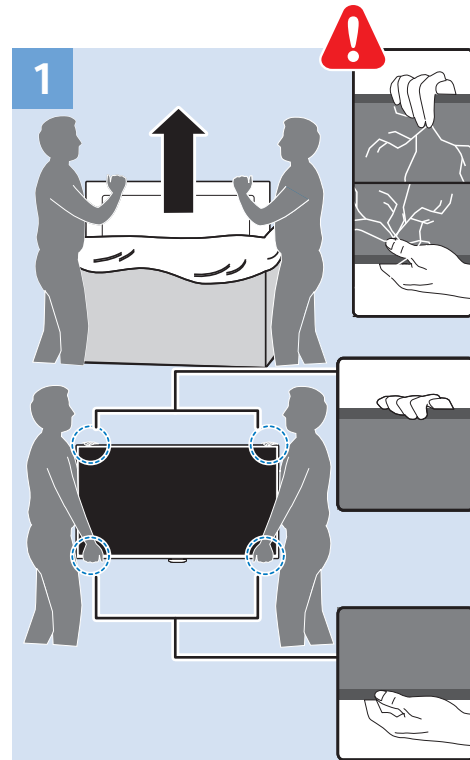
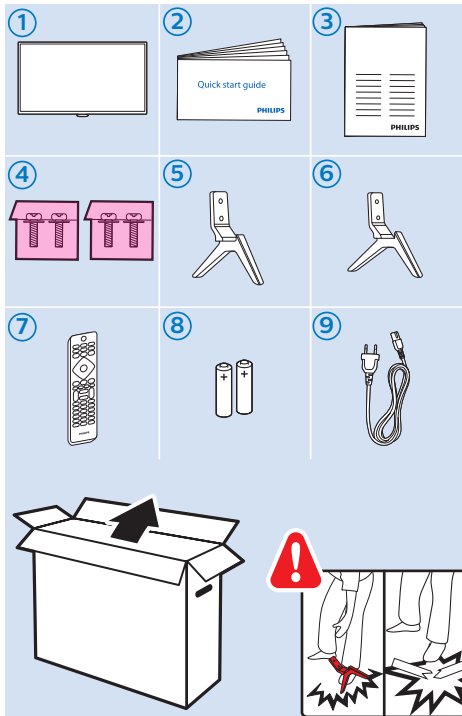
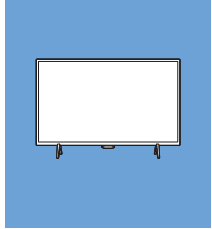
Tiếng Việt – Hãy đọc chỉ dẫn an toàn.

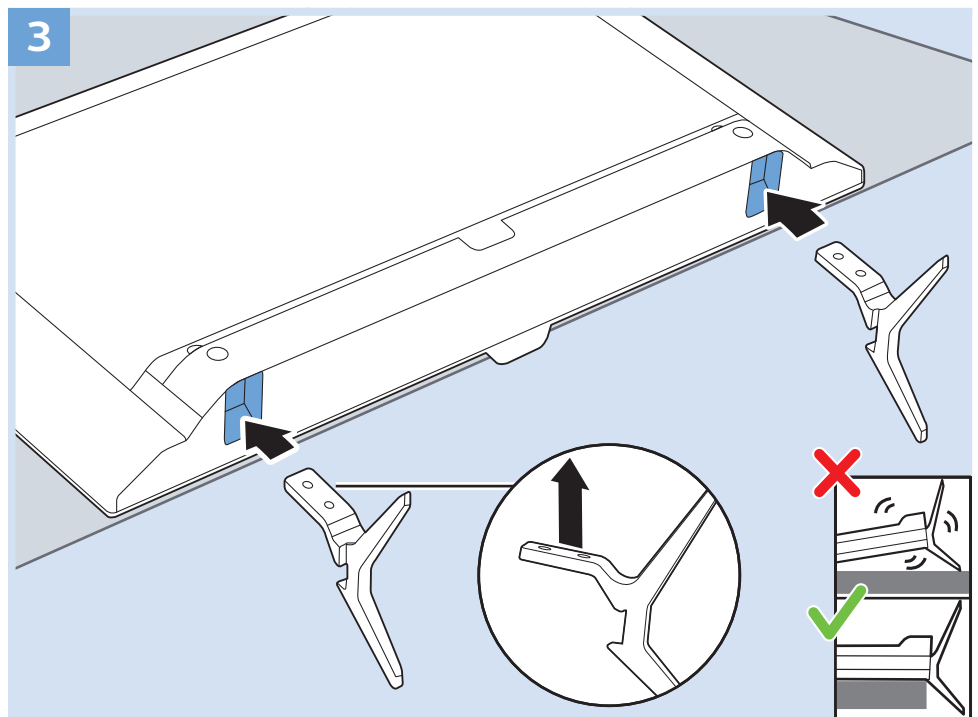
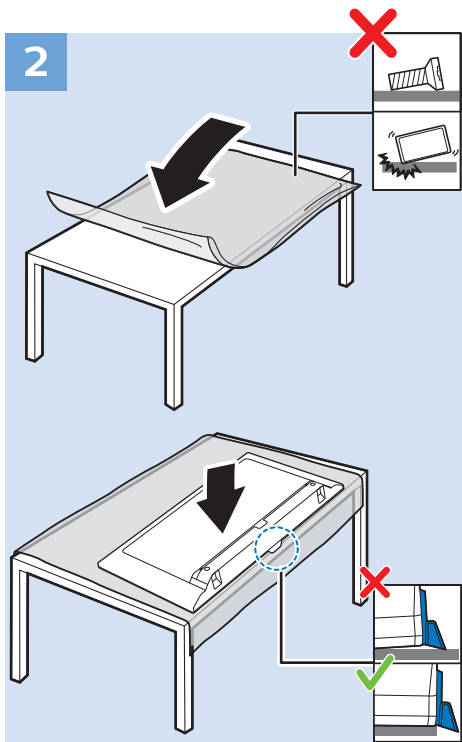
简体中文 – 请阅读安全说明。

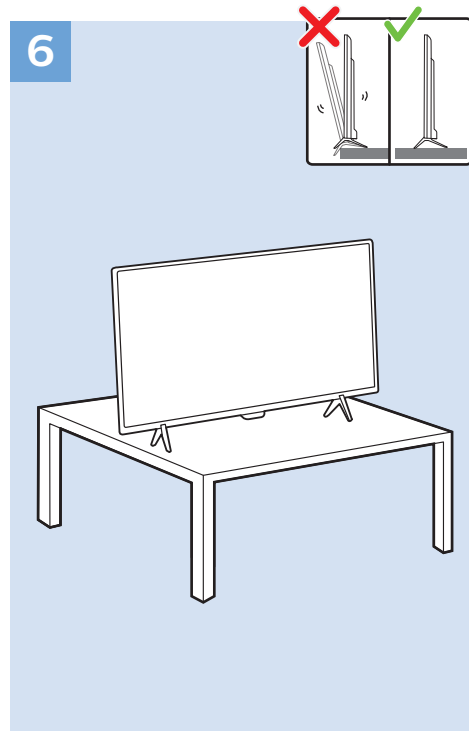
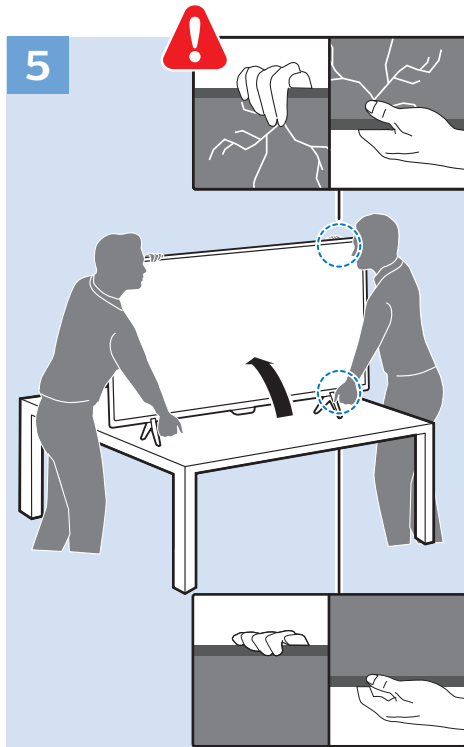
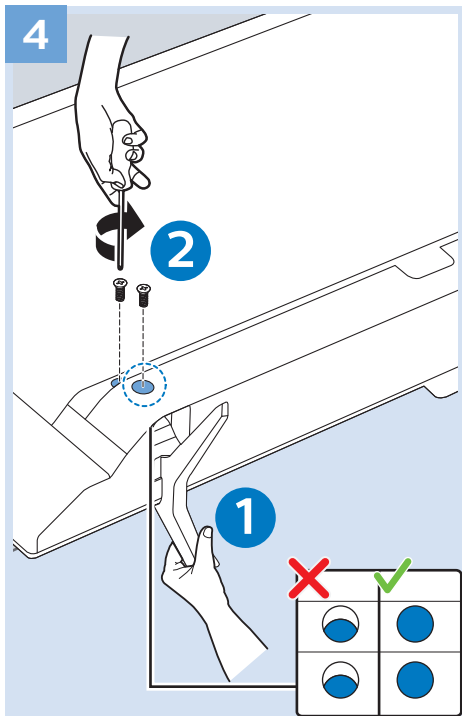
繁體中文 – 請閱讀安全說明。

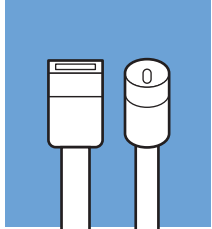
العربية قراءة تعليمات السلامة.

עברית קראו את הוראות הבטיחות



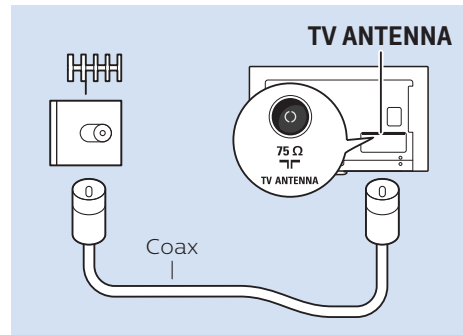
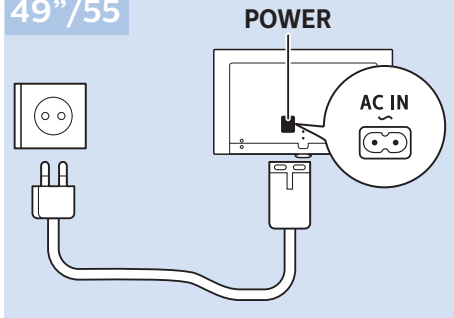




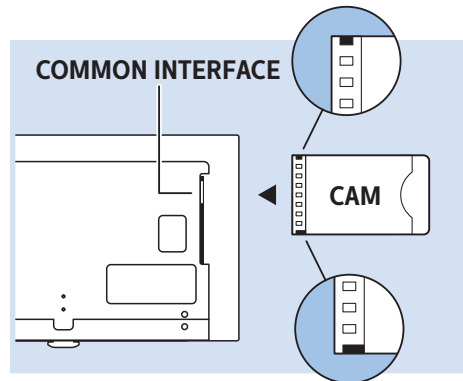
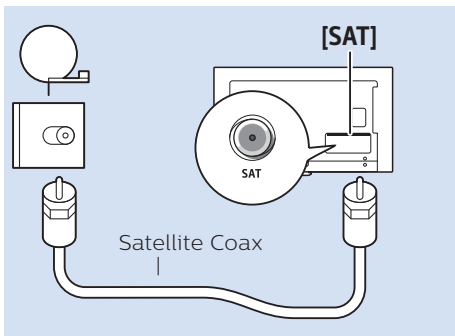
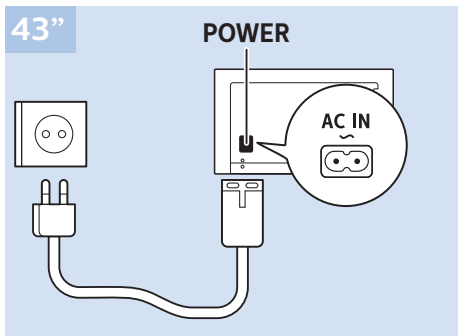


www.philips.com/connectivityguide

49"/55

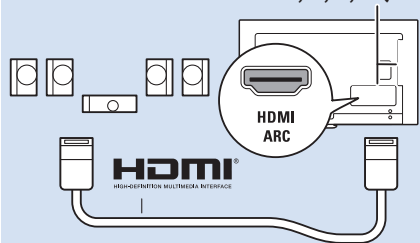


43"



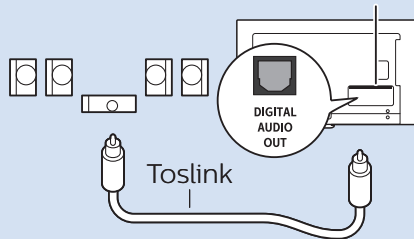
Digital Audio System - HDMI ARC

HDMI 1, 2, 3, 4 (ARC)

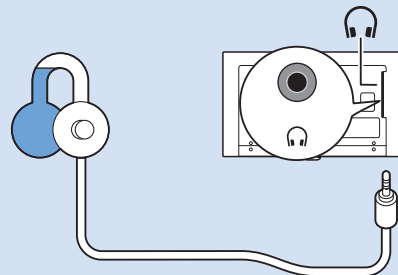


Digital Audio System - OPTICAL

DIGITAL AUDIO OUT - OPTICAL

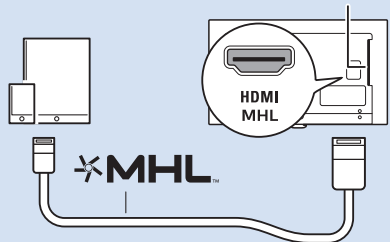


Headphones



MHL

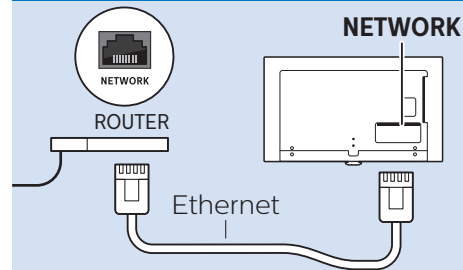
HDMI 4 / MHL



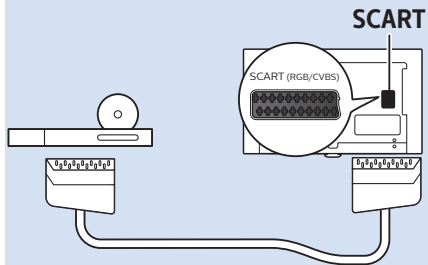
Network - Wireless



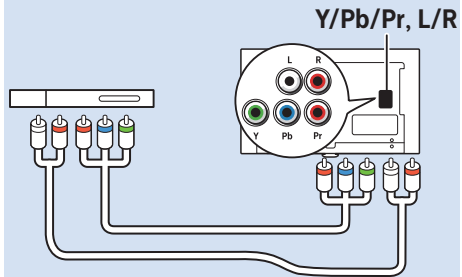
Network - Wired



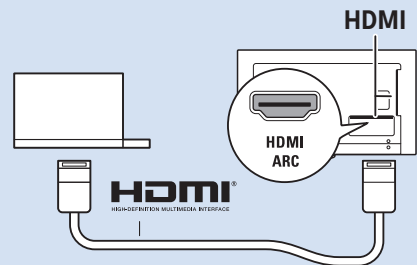
DVD Player - SCART



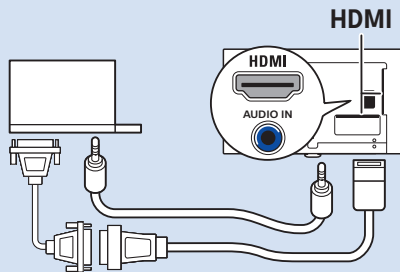
Video Player - YPbPr, L/R



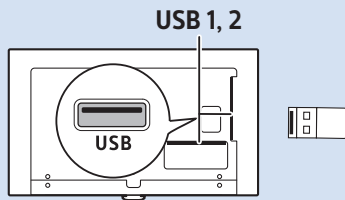
Computer - HDMI



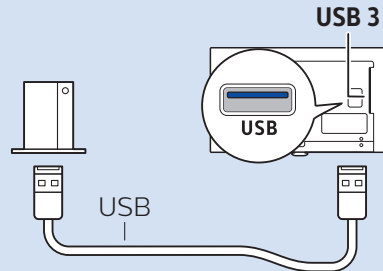
Computer - HDMI/DVI, AUDIO IN



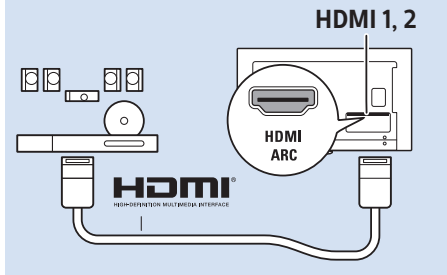
USB Flash Drive



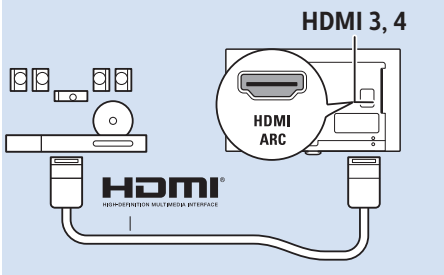
USB Hard Drive

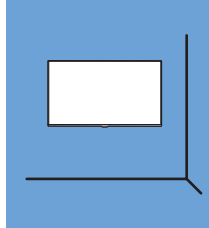
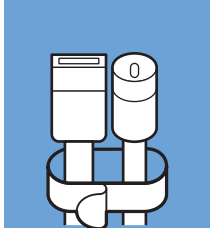


Multimedia Player (UHD Video source)



Multimedia Player (FHD Video source)





VESA (x, y)
43" 200x200 M6
49"/55" 400x200 M6

43"

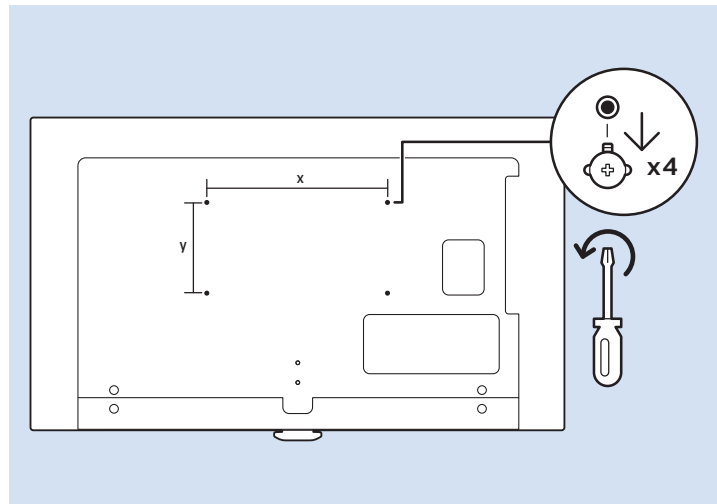
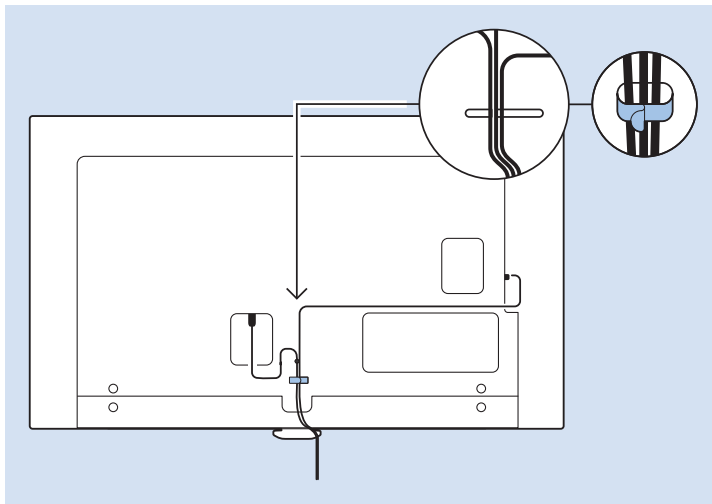
49"

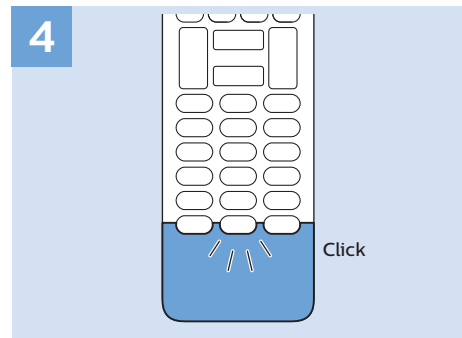
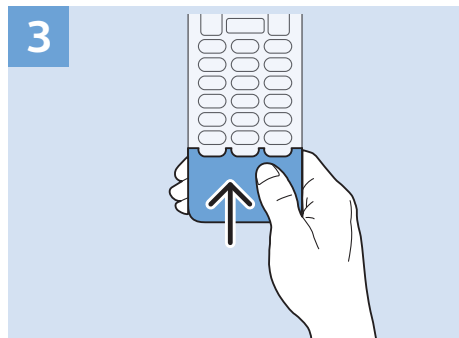
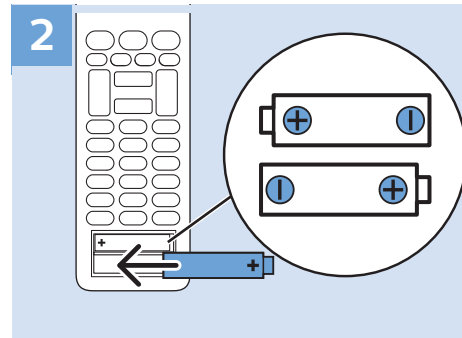
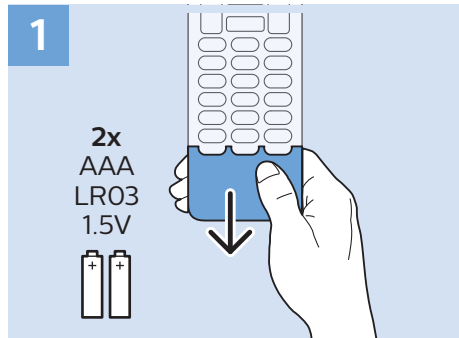
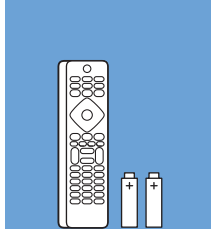
55"

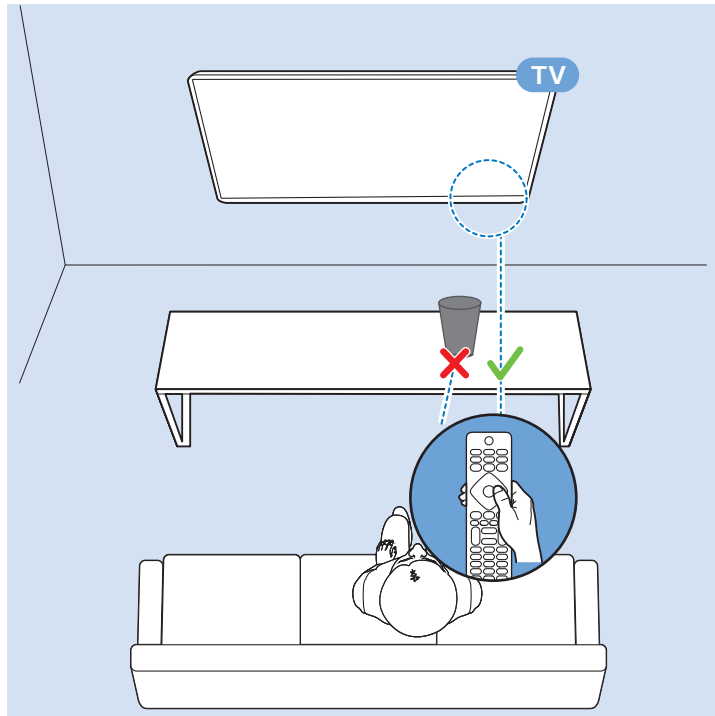
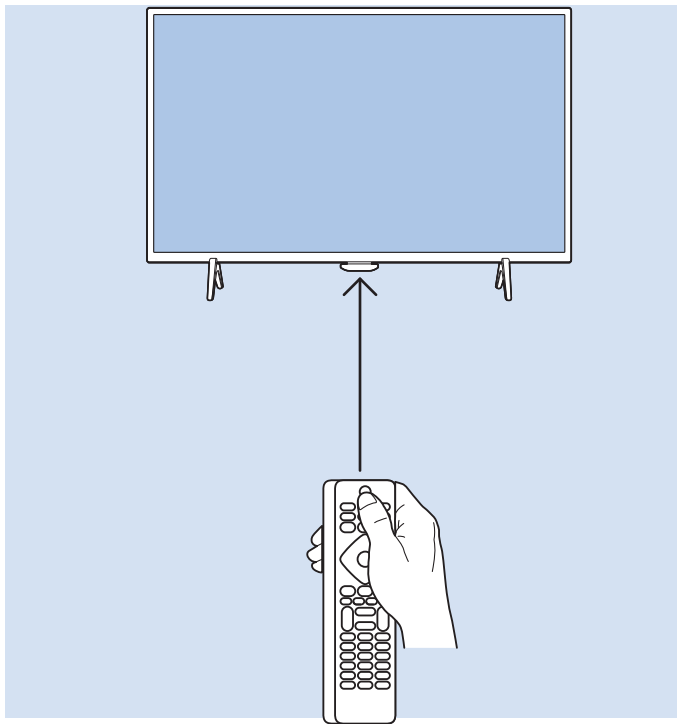
108cm

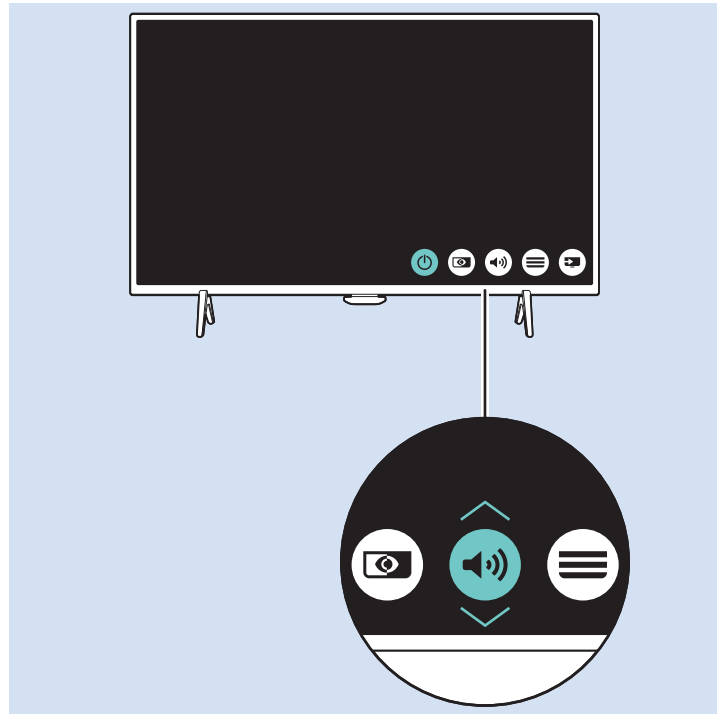
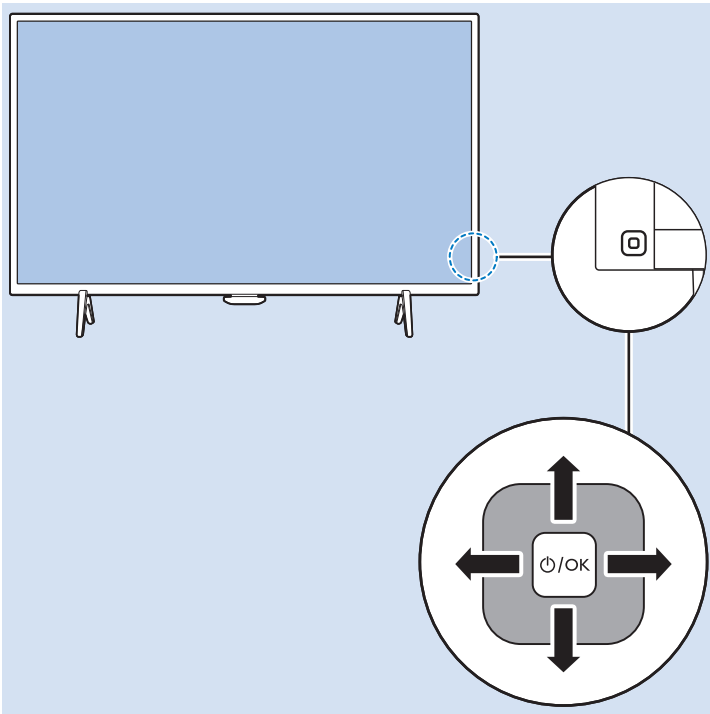
123cm

139cm







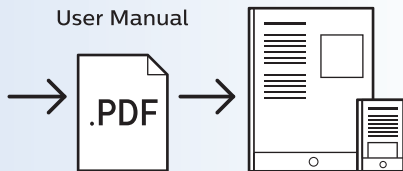




Help | Hilfe | Aide
Guida | Ayuda
Pomoc | Yardım
Руководство



philips.com/support





All registered and unregistered trademarks are property of their respective owners.
Specifications are subject to change without notice.
Philips and the Philips' shield emblem are trademarks of Koninklijke Philips N.V.
and are used under license from Koninklijke Philips N.V.
2017 © TP Vision Europe B.V. All rights reserved.

philips.com