

Register your product and get support at  
[www.philips.com/welcome](http://www.philips.com/welcome)

4200 series

**PHILIPS**



English - Read the safety instructions.

Deutsch - Lesen Sie die Sicherheitshinweise.

Français - Lisez les consignes de sécurité.

Bahasa Indonesia - Baca petunjuk  
keselamatan.

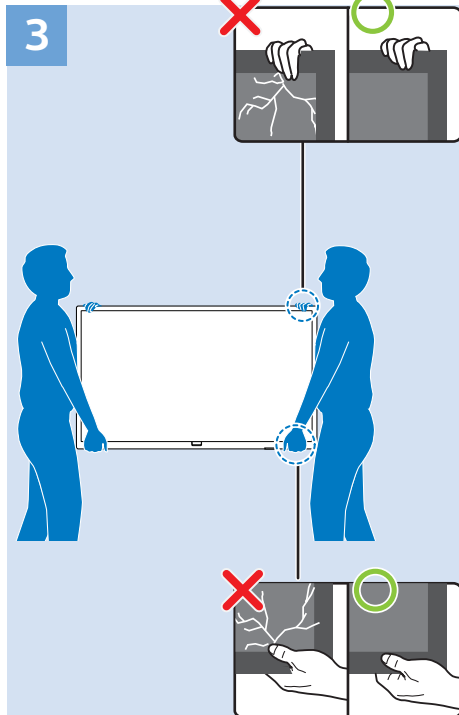
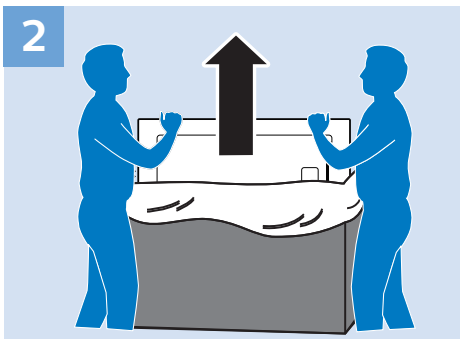
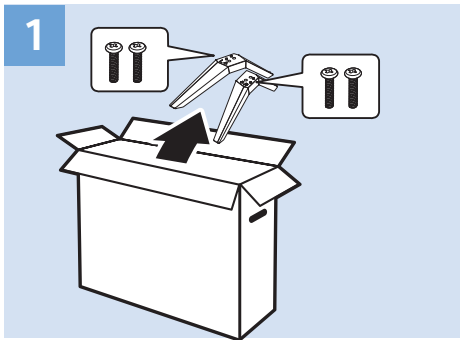
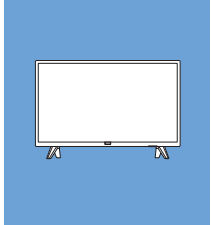
Bahasa Malaysia - Baca arahan  
keselamatan.

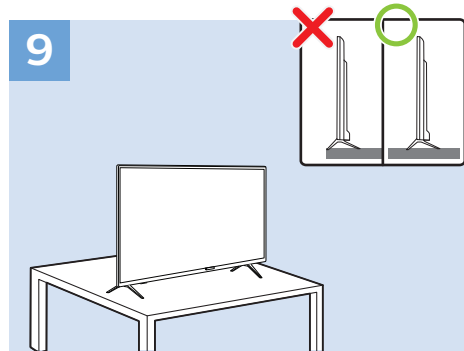
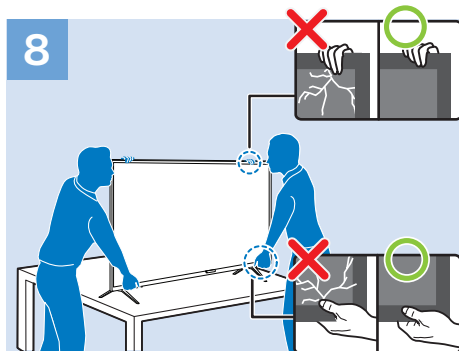
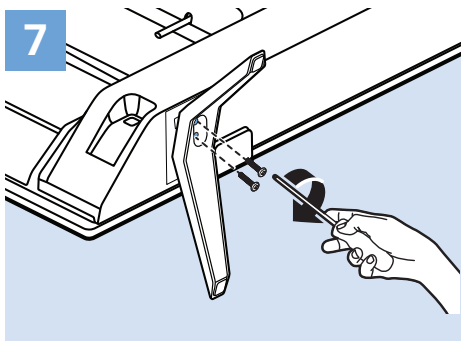
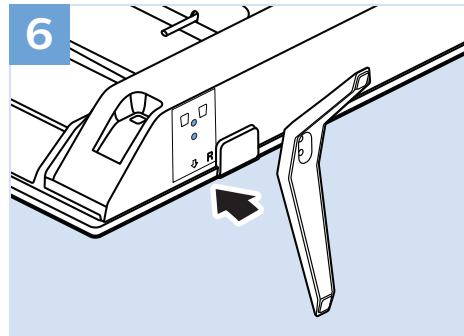
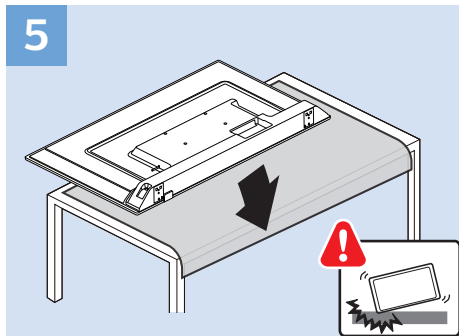
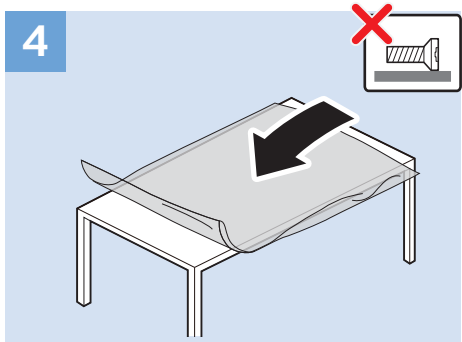
ภาษาไทย โปรดอ่านคำแนะนำด้านความปลอดภัย

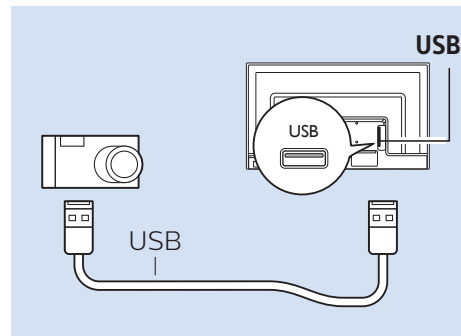
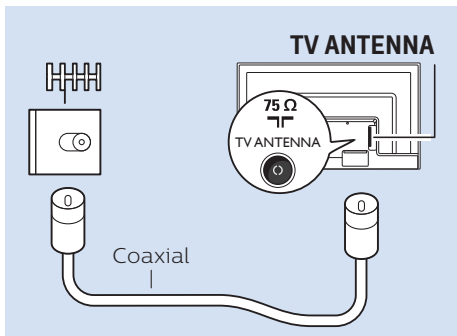
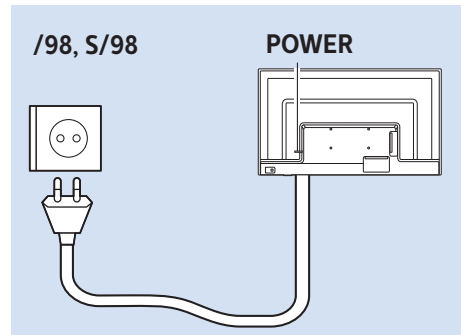
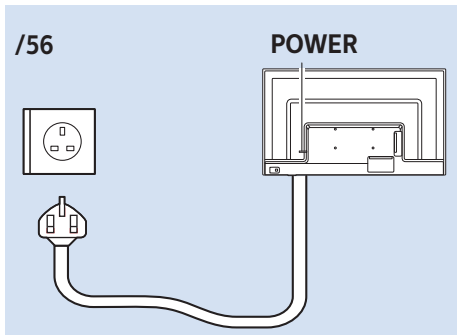
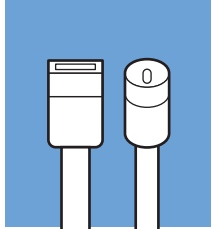
Tiếng Việt - Hãy đọc chỉ dẫn an toàn.

简体中文 - 请阅读安全说明。

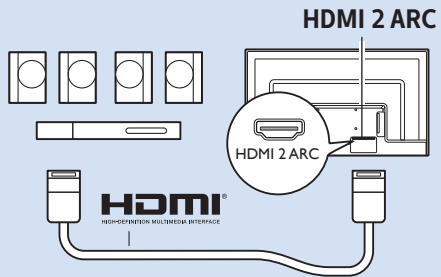
العربية قراءة تعليمات السلامة.



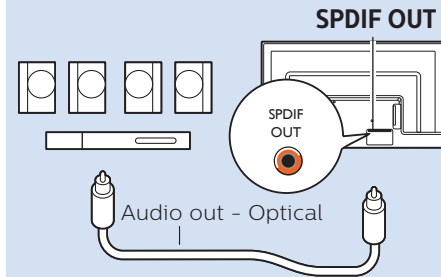




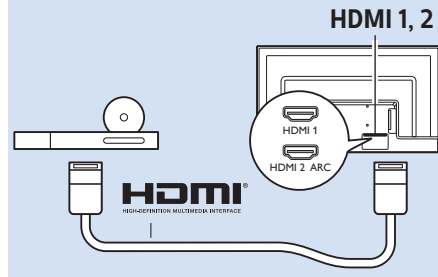
## Digital Audio System - HDMI ARC



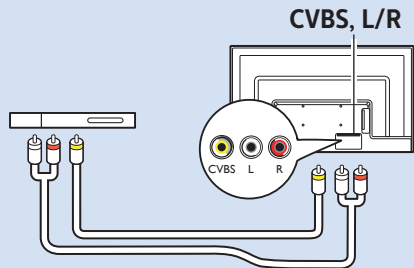
## Digital Audio System - OPTICAL



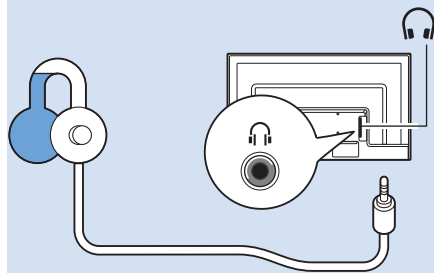
## DVD Player



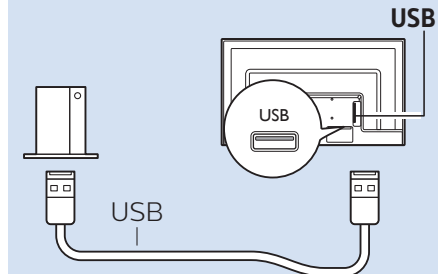
## Video player



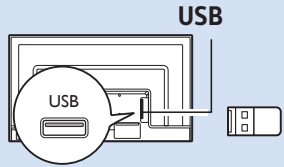
## Headphone



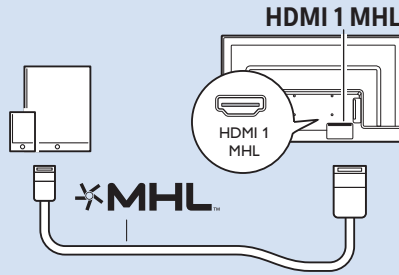
## USB Hard Drive

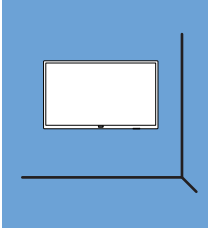


## USB Flash Drive



## MHL

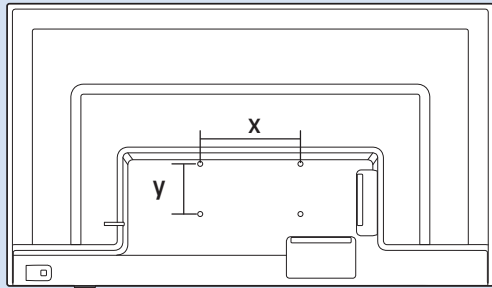




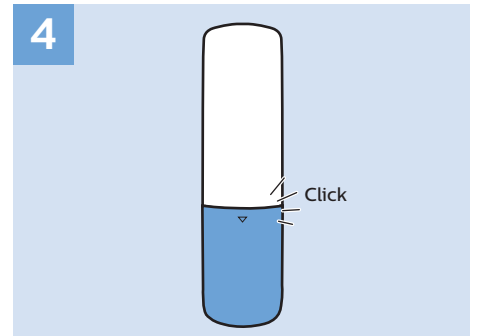
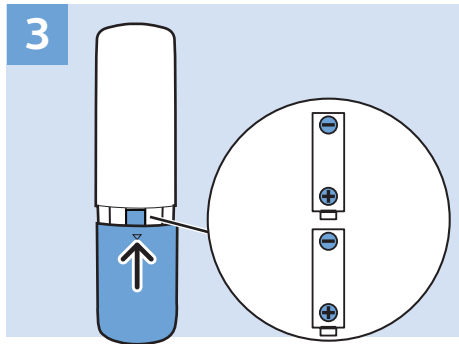
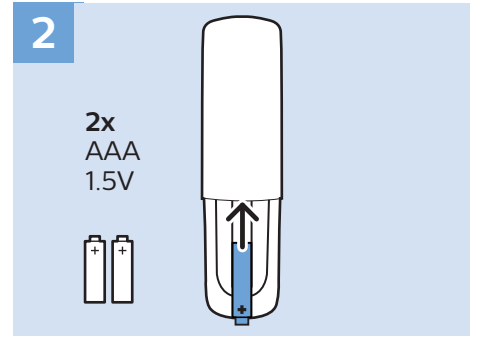
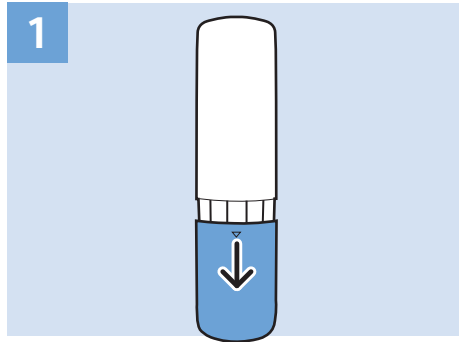
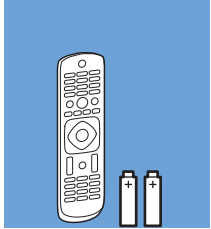
VESA (x, y)

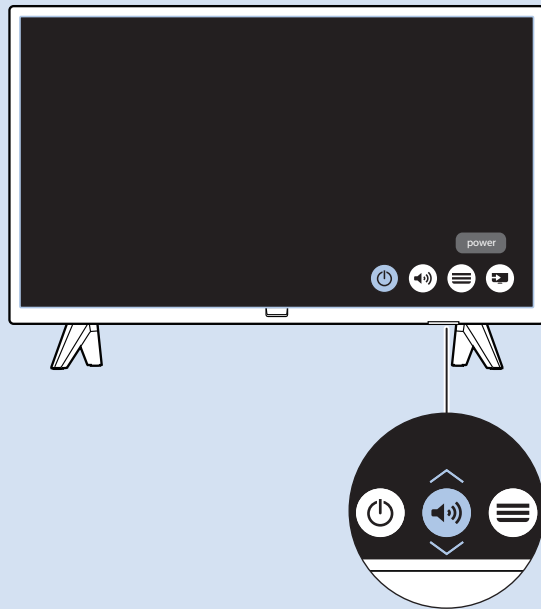
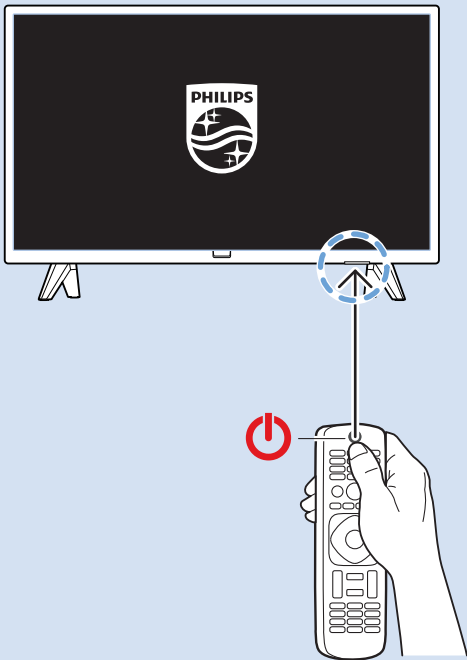
43" 200 x 100 M6

108cm



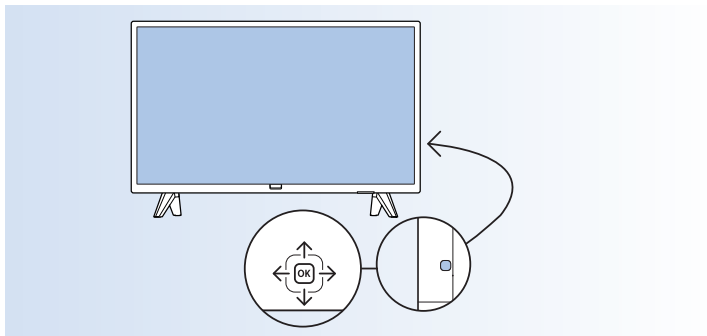








Help



[www.philips.com/TVsupport](http://www.philips.com/TVsupport)



4200 Series  
User Manual





All registered and unregistered trademarks are property of their respective owners.  
Specifications are subject to change without notice.  
Philips and the Philips' shield emblem are trademarks of Koninklijke Philips N.V.  
and are used under license from Koninklijke Philips N.V.  
2018 © TP Vision Europe B.V. All rights reserved.

[philips.com](https://www.philips.com)