

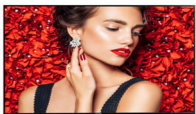


Philips Signage Solutions  
Q-Line Display

43"

Direct LED Backlight  
Full HD

**Signage**Solutions



43BDL4031D

## Intensify your signage experience

with priceless smart performance

Deliver startlingly clear images in a more eco-friendly way. High on performance and reliability, yet low on power consumption, it is ideal for projects where no compromise is accepted.

### Maximizing the impact of your message

- Full HD LED for brilliant images with incredible contrast
- Manage and control your network remotely via SmartControl

### Innovative solutions for any signage application

- Free and easy-to-use content management with SmartCMS
- Connect and control your content via the cloud with HTML5
- Save and play content with internal memory
- Schedule what you want, when you want with SmartPlayer

### Care about you, your business and your audience

- Show clinical images consistently with D-image
- SmartPower for energy saving

**PHILIPS**

# Highlights

## Full HD LED technology

Picture Quality matters. Regular displays deliver quality, but you expect more. Imagine crisp detail paired with high brightness, incredible contrast and realistic colors for a true to life picture.

## SmartControl



SmartControl lets you remotely control and manage your network of displays via RJ45 and RS232C. Easily fine-tune all display settings including resolution, brightness, contrast and cloning of your settings over your complete network.

## SmartCMS



Free and easy-to-use content management system that works exclusively with Philips Sigage Solutions displays to manage your digital signage content. With SmartCMS you can create and schedule your own content over 24

hours every day. Simply create your network, design your content, schedule your playlist and you are ready to play!

## SmartBrowser



Connect and control your content via the cloud with the integrated HTML5 browser. Design your signage content online and connect it with a display or with your complete network. Simply plug in a RJ45 internet cable for network connection, connect the display with the dedicated url-address and you are ready to play your cloud based content.

## Internal Memory

Save and play content with internal memory. Upload your media into the display and playback content immediately. Working in conjunction with the internal browser, it also serves as a memory cache when streaming online content. If the network ever fails, the internal memory keeps content running by playing a cached version of the content, ensuring that your media stays up even if the network goes down.

## SmartPlayer

Turn your USB into a true cost effective digital signage device. Simply save your content

(video, audio, pictures) on your USB and plug into your display. Create your playlist and schedule your content via the on screen menu, and enjoy your own created playlists anytime, anywhere.

## Clinical D-image



D-image helps you to review and diagnose clinical images with consistent and accurate display performance. To achieve reliable clinical interpretations our professional displays are factory calibrated to give optimized greyscale standard display performance. D-image helps you to excel in every aspect of patient care.

## SmartPower



The backlight intensity can be controlled and pre-set by the system to reduce the power consumption by up to 50%, which saves substantially on energy costs.

# Specifications

## Picture/Display

- Diagonal screen size: 42.5 inch / 108 cm
- Panel resolution: 1920x1080p
- Optimum resolution: 1920 x 1080 @ 60 Hz
- Brightness: 450 cd/m<sup>2</sup>
- Contrast ratio (typical): 1100:1
- Dynamic contrast ratio: 500,000:1
- Response time (typical): 12 ms
- Aspect ratio: 16:9
- Viewing angle (H / V): 178 / 178 degree
- Pixel pitch: 0.4902 x 0.4902 mm
- Display colors: 16.7 Million
- Panel technology: IPS
- Picture enhancement: 3/2 - 2/2 motion pull down, 3D Combfilter, 3D MA deinterlacing, Motion compens. deinterlacing, Progressive scan
- Placement: Landscape (24/7), Portrait (24/7)

## Supported Display Resolution

### Computer formats

Resolution	Refresh rate
640 x 480	60, 67, 72, 75Hz
800 x 600	56, 60, 72, 75Hz
1024 x 768	60Hz
1280 x 768	60Hz
1280 x 800	60Hz
1360 x 768	60Hz
1366 x 768	60Hz
1440 x 900	60Hz
1920 x 1080	60Hz
1600 x 1200	60Hz
1920 x 1200	60Hz
3840 x 2160	30Hz

### Video formats

Resolution	Refresh rate
480i	60Hz
480p	60Hz
576p	50Hz
576i	50Hz
720p	50, 60Hz
1080i	50, 60Hz
1080p	50, 60Hz
2160p	30Hz

## Connectivity

- Video input: Display Port1.2 (x1), DVI-I (x 1), HDMI (x2)
- Audio input: 3.5 mm jack
- Audio output: 3.5mm jack
- External control: RJ45, RS232C (in/out) 2.5 mm jack, IR (in/out) 3.5 mm jack
- Video output: DisplayPort 1.2 (x1), DVI-I (x1)

## Convenience

- Screen saving functions: Pixel Shift

- Tiled Matrix: Up to 15 x 15
- Keyboard control: Lockable, Hidden
- Network controllable: RS232, RJ45
- Signal Loop Through: IR Loophrough, DVI
- Picture in picture: PIP

## Dimensions

- Bezel width: 9.6 mm (T/L/R), 15.7 mm (B)
- Set dimensions (W x H x D): 965.0 x 559.3 x 45.5 mm
- Set dimensions in inch (W x H x D): 37.99 x 22.02 x 1.79 inch
- VESA Mount: 400 x 400mm, M6
- Product weight: 10.41 kg
- Product weight (lb): 22.95 lb

## Operating conditions

- Temperature range (operation): 5 ~ 40 °C
- Temperature range (storage): -20 ~ 60 °C
- MTBF: 50,000 hour(s)
- Altitude: 0 ~ 3000 m
- Humidity range (operation)[RH]: 10 ~ 90% (without condensation)
- Humidity range (storage) [RH]: 0 ~ 100% (without condensation)

## Power

- Consumption (On mode): 120W( max)
- Mains power: AC (100 ~ 240 V) , 2.5A
- Standby power consumption: <0.5 W
- Consumption (Typical): 65 W

## Sound

- Built-in speakers: 2 x 10W RMS

## Accessories

- Included accessories: AC Power Cord, RS232 cable, Remote Control, Batteries for remote control, Quick start guide
- Included Accessories: Edge Alignment Kit (1 )-2pcs, Edge Alignment Kit (2)-1pcs, M3 screw (x1), RS232 daisy-chain cable, SD card cover (x1), Thumb Screw (x8)
- Stand: BM05922 (Universal Stand-L)(Option)

## Miscellaneous

- Warranty: 3 year warranty
- On-Screen Display Languages: English, French, German, Italian, Polish, Russian, Spanish, Turkish, Simplified Chinese, Traditional Chinese, Arabic, Japanese
- Regulatory approvals: CE, UL/cUL, CB, EAC, EMF, EnergyStar 8.0, FCC, Class A, PSB



Issue date 2020-10-05

Version: 2.0.2

12 NC: 8670 001 57449  
EAN: 87 12581 75594 2

© 2020 Koninklijke Philips N.V.  
All Rights reserved.

Specifications are subject to change without notice.  
Trademarks are the property of Koninklijke Philips N.V.  
or their respective owners.

[www.philips.com](http://www.philips.com)