

How to upgrade the TV software

Note: After you have downloaded the new software, double click on the zip-file and copy **ALL** the .upg file(s) to the root directory of the **USB** memory device.

Introduction

Philips continuously tries to improve its products and it wants you to profit of that even after your purchase. Therefore it allows you to upgrade your TV software using a USB memory device (not supplied). You can execute the software upgrade procedure yourself.

Preparing a USB portable memory for software upgrade

What do you need ?

- An archive utility that supports the ZIP-format (e.g. WinZip for Windows or Stuffit for Mac OS).
- A USB portable memory with min. 128 Mb free space.

New software can be downloaded from the **www.philips.com/support** website.

1. Click on the **Download arrow** in the upper left corner of your screen.
2. Save the latest software upgrade file to your computer.
3. Double click on the zip-file in order to see the content.
- 4; Copy the autorun file or both autorun files (if there are two) to the root directory on the USB memory device.

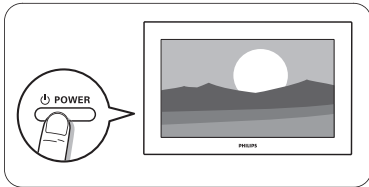
Note: Only use software upgrades that can be found on the www.philips.com/support web site.

How to upgrade the TV software (continued)

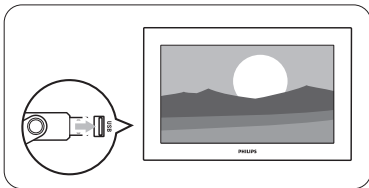
Television upgrade

Warning:

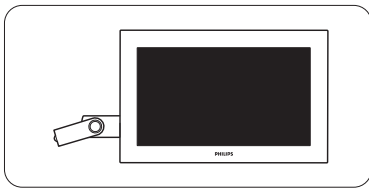
- You are not allowed to remove the USB portable memory during the software upgrade procedure;
- In case of a power drop during the upgrade procedure, don't remove the USB portable memory from the TV. The TV will continue the upgrade as soon as the power comes back;
- If an error occurs during the upgrade you should retry the procedure or if you need further assistance or in case of problems, please call your local Philips Customer Centre. See Philips Consumer Care on the www.philips.com/support website.



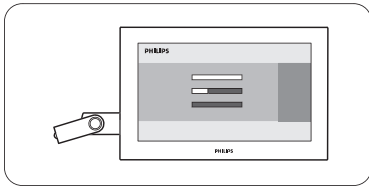
1. Switch the TV on.



2. Insert the USB memory stick in the USB slot of the TV.

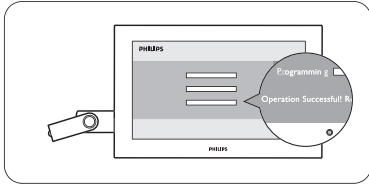


3. The TV switches off.
The screen stays black for about 10 seconds.
Please, wait and do not use the power switch on the TV.

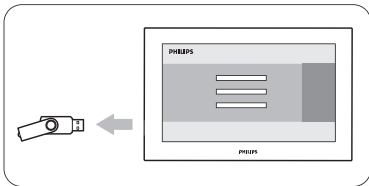


4. The upgrade process starts automatically.
Please wait.

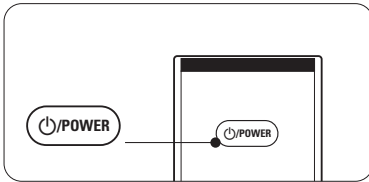
How to upgrade the TV software (continued)



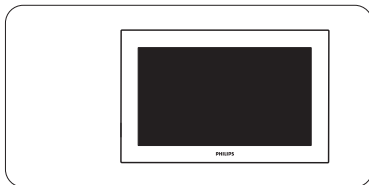
5. The upgrade is finished when the message “Operation successful” appears on the screen.



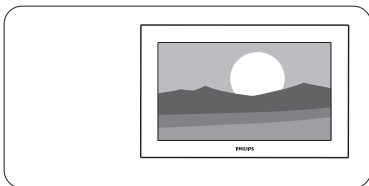
6. Remove the USB memory stick from the TV.



7. Press **POWER** on the remote control.
Do not press more than once.
Do not use the power switch on the TV.



8. The TV switches off.
The screen stays black for about 10 seconds.
Please, wait.



9. The TV switches back on again.
The upgrade is done.

10. Once the upgrade is finished use your PC to remove the TV software from your USB portable memory.

Software history

Main modifications

Each release contains:

- All solutions identified in earlier versions
- Improved connectivity to improve compatibility with other external devices

Q5492_0.26.69.0

- Solving Italian broadcast issue.

Q5492_0.26.66.0

- Automatic Channel Installation - all presets shifted by one.
- IP-EPG is available again.
- case of 'undefined' OSD resolved.
- 'no TXT on RTL4' - Teletext performance enhanced.
- Yellow button forwarded to NetTV.(RTL gemist service)
- Robustness of subtitles improved.
- Higher number of EPG channels.
- Parental rating applicable for Radio/HDMI.
- Improved network connectivity with some routers.

Q5492_0.26.58.5

- Introduction of the extra feature named Interactive TV via the " Red Button " on the remote control, initially, the feature works for Dutch channels on those TVs in the **Netherlands** without a set-top box. Interactive TV will not be offered in the **UK**, as the red color key is used for other interactive applications (MHEG)
- Solution for Automatic Channel Installation on the UPC network in the Netherlands.
- Except for the 56PFL9954H/12, the feature Scenea can be used. (Scenea is a new feature, which allows you to use your TV as a big photoframe. By selecting Scenea you will see a butterfly, this is the standard Scenea picture. You can load your personal picture by watching it in the content browser, pressing the options key, navigating down to "Set as Scenea ". Then your personal picture will get stored as the "Scenea picture", so from then onwards when choosing Scenea in the Home menu you will see your personal picture. In Scenea, any key press returns you to "Watch TV". The maximum displaying time in Scenea is 240 minutes. A few minutes before the set switches of a message is displayed to warn the customer.
- Improved cam authentication.

Q5492_0.26.38.22

- Support for DVB-S2 box.
- resolves installation issue on DVB-C and analog networks in the Netherlands and Germany.

Q5492_0.26.38.13

- Full DVB-C Austria & Switzerland availability.

- Improvement of robustness of the side control.
After updating this software the operation of the side control can be slightly different as before. It might be that the TV needs a confirmation of the key press. This means, the first press activates the side control, while the second press executes the action. During 15 seconds the side control will operate immediately on the key press. Afterwards, again the activation is needed.

Q5492_0.26.33.14

- Solving video drop outs when changing channels on external set-top box.

Q5492_0.26.33.12

- Reliability for Net TV improved.

Q5492_0.26.33.9

- Improvement.avi media via WIFI in the Netherlands.
- Sound improvements for France.
- Possibility to swith off the digital channel update in standby mode.

Q5492_0.26.29.6

- For France:Canal+decoder:solution for the preset sometimes skipped after using back key or after standby.
- Improvement on the startup behavior of the NetTV functionality .
- This software is RiksTV certified.
- Improved installation behaviour for DVB-C countries Netherlands & Austria.
- DGTVi certified.

Q5492_0.26.24.8

- HD simulcast presets are not misplaced anymore by an overnight update installation.
- improved USB Browse stability.
- DVB-T MPEG4 support for Slovenia.