

Philips TV Software Upgrade with Portable Memory

Introduction

Philips continuously tries to improve its products, and we recommend that you update the TV software when updates are available. Software update files can be obtained from your dealer or can be downloaded from the www.philips.com/support.

Preparing a portable memory for software upgrade

You require the following:

- A personal computer connected to the Internet.
- An archive utility that supports the ZIP-format (e.g. WinZip for Windows or StuffIt for Mac OS).
- A USB flash drive (preferably empty).

NOTE

* Only FAT/DOS-formatted flash drives are supported.

* Only use software update files that can be found on the www.philips.com/support web site.

Check the current TV software version

Before starting the software upgrade procedure, it is advised to check that what the current TV software:

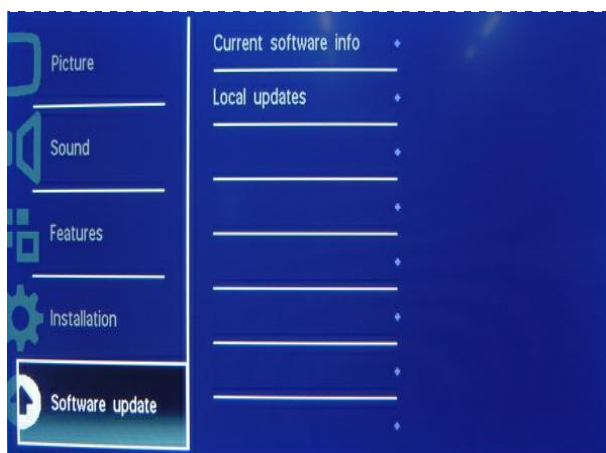
1. Press the Home button on your remote control.
2. Select [Software update] > [Current software].

If the current software version of your TV is the same as the latest update file found on www.philips.com/support, it is not necessary to update the TV software.

Download the latest software

1. Point your web browser to www.philips.com/support.
2. Find information and software related to your TV.
3. Select the latest software update file and download it to your PC.
4. Insert a USB flash drive into one of the USB ports of your PC.
5. Decompress the downloaded ZIP file and copy the "upgrade.bin" to the root directory of the USB flash drive.

Update the TV software



1. Power off your TV and disconnect all memory devices.

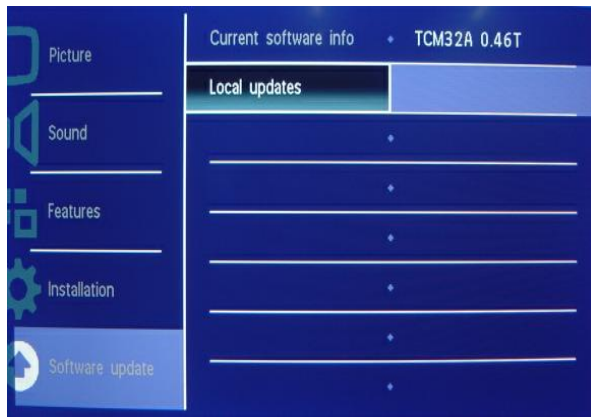
2. Insert the USB flash drive that contains the software update file.

3. Switch on your TV.

4. Press Menu on your remote control.

NOTE

If the USB flash drive is not detected after power up, disconnect it and reinsert it.



5. Select [Software update] > [Local updates] and press OK.

6. When prompted, select [Cancel] or [Update] and press OK.

7. To proceed, select [Update] and press OK key to enter next menu. In next menu select [Start] and press OK to start software updates.

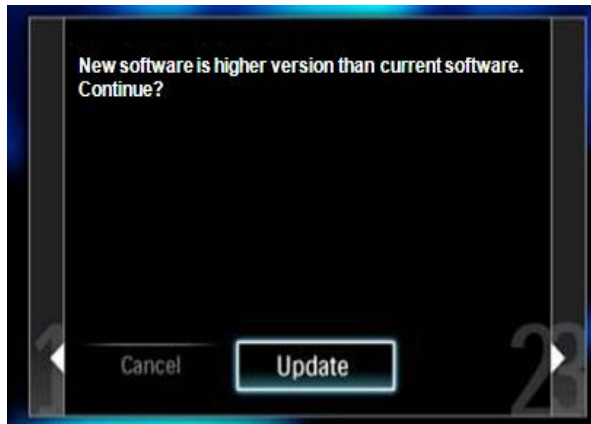
8. Upgrading will now begins and the status of the updating progress will be displayed.

9. When the TV software is updated, the TV automatically restarts and the TV starts up with the new software.

NOTE

* Do not remove the USB flash drive during the software update.

* If a power failure occurs during the update, do not remove the USB flash drive from the TV. The TV will continue the software update as soon as power comes back.



Please don't shut off the power.
The software update may takes 3 to 5 minutes.

Erasing...



Please don't shut off the power.
The software update may takes 3 to 5 minutes.

Upgrading... 14%

* If an error occurs during the update retry the procedure or contact your dealer.

* We do not recommend downgrading to an older version.



Note: Once the upgrade is finished, use your PC to remove the TV software from your USB portable memory.

Software History

TCM31L 0.57

Production release version.