

Fold

Register your product and get support at  
Registre su producto y reciba servicios de soporte en:  
[www.philips.com/welcome](http://www.philips.com/welcome)

32PFL3403D

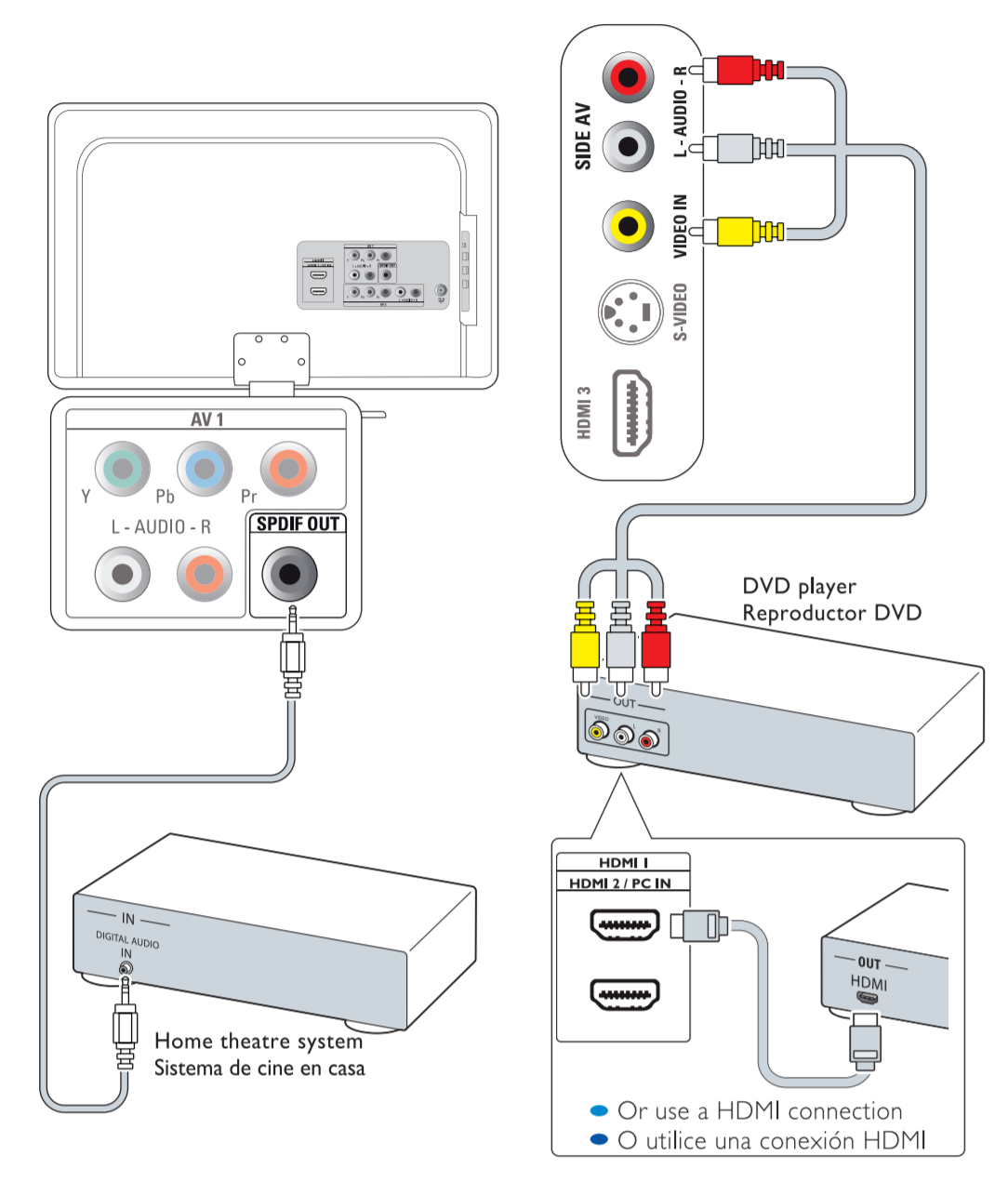
# Quick Start

- EN Installation
- ES Instalación

**PHILIPS**

## 6 DVD player, home theatre system

• Reproductor DVD, sistema de cine en casa

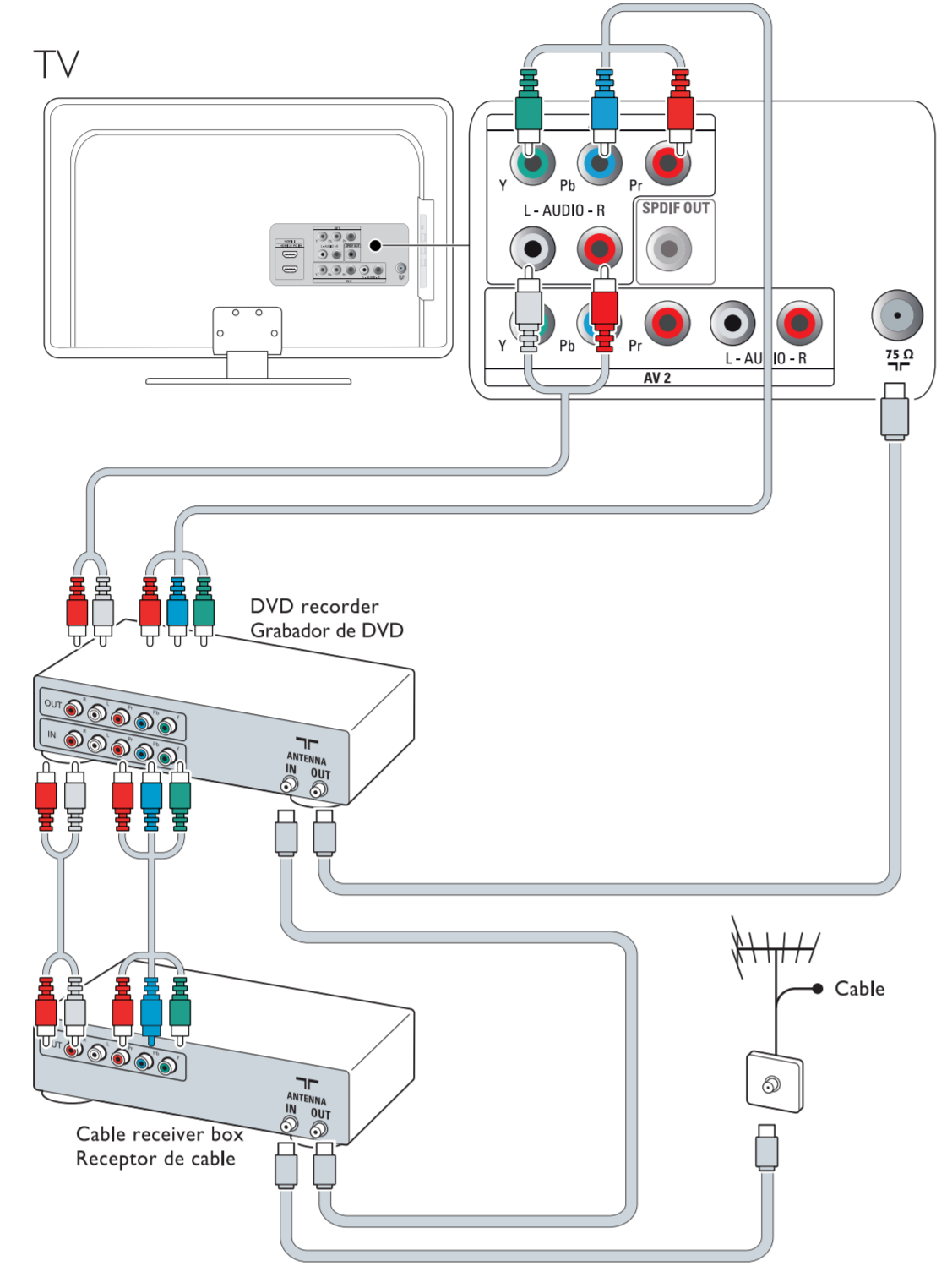


Specifications are subject to change without notice. Trademarks are the property of Koninklijke Philips Electronics N.V. or their respective owners. 2008 © Koninklijke Philips Electronics N.V. All rights reserved. [www.philips.com](http://www.philips.com)

Printed in China

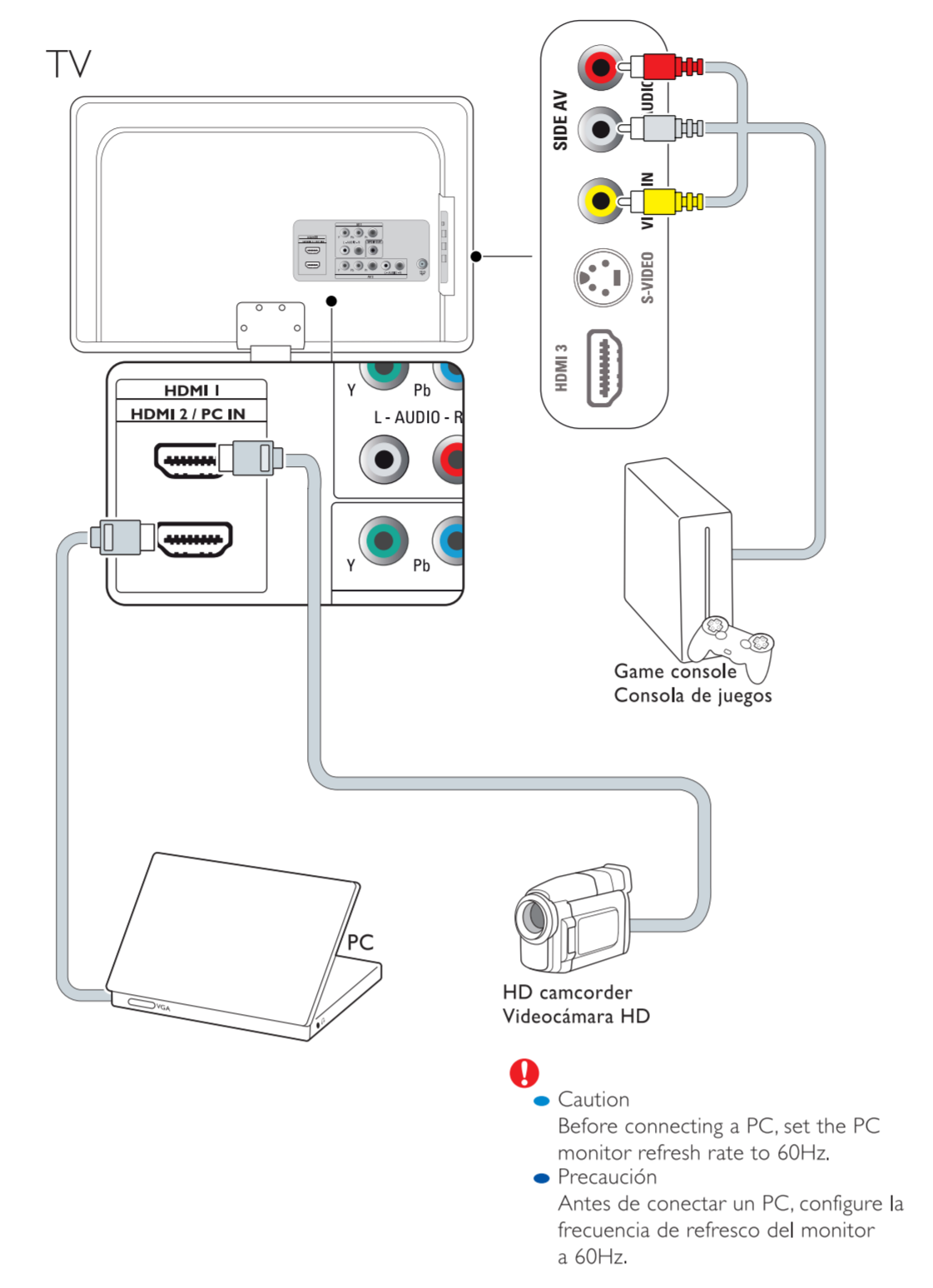
## 7 DVD recorder, cable receiver box

• Grabado DVD, receptor de cable



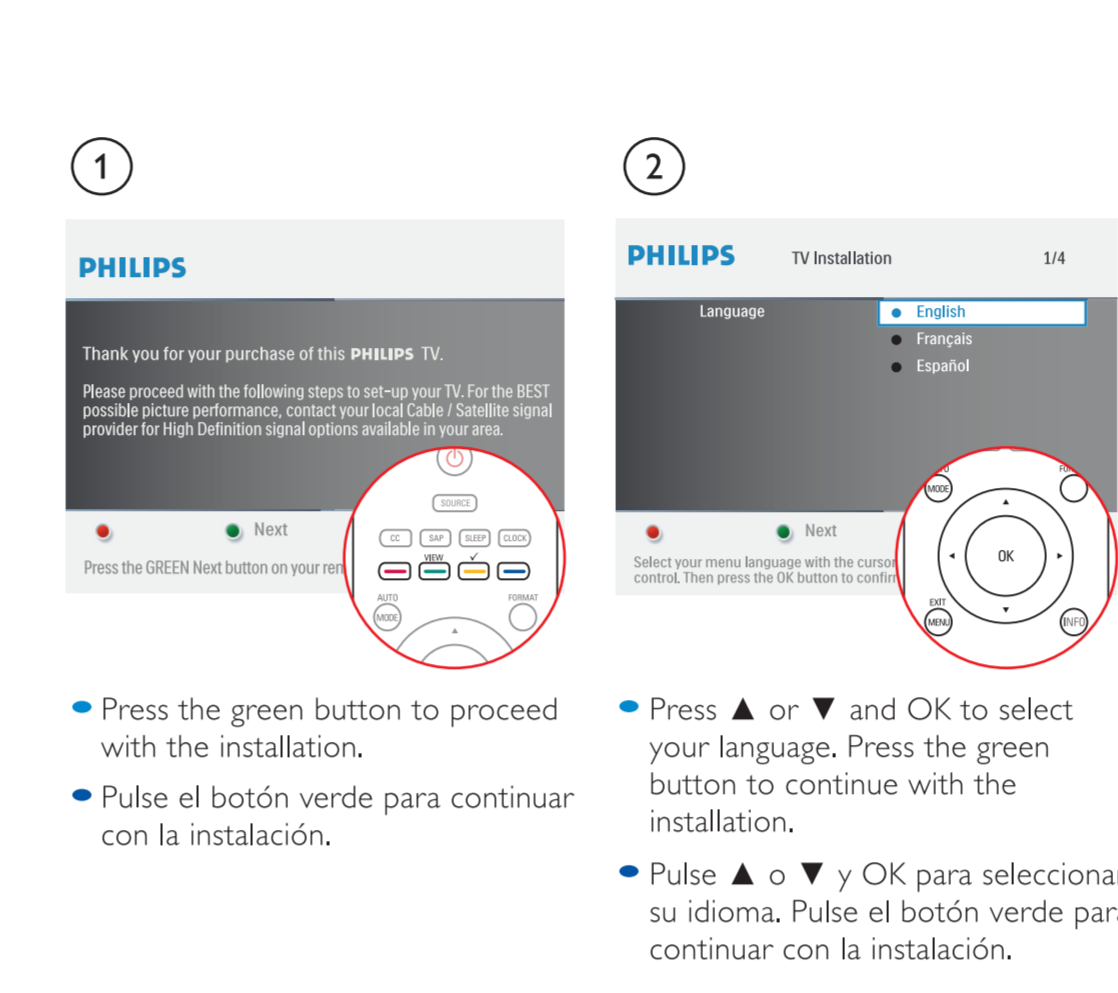
## 8 Game console, HD camcorder, PC

• Consola de juegos, videocámara HD, PC



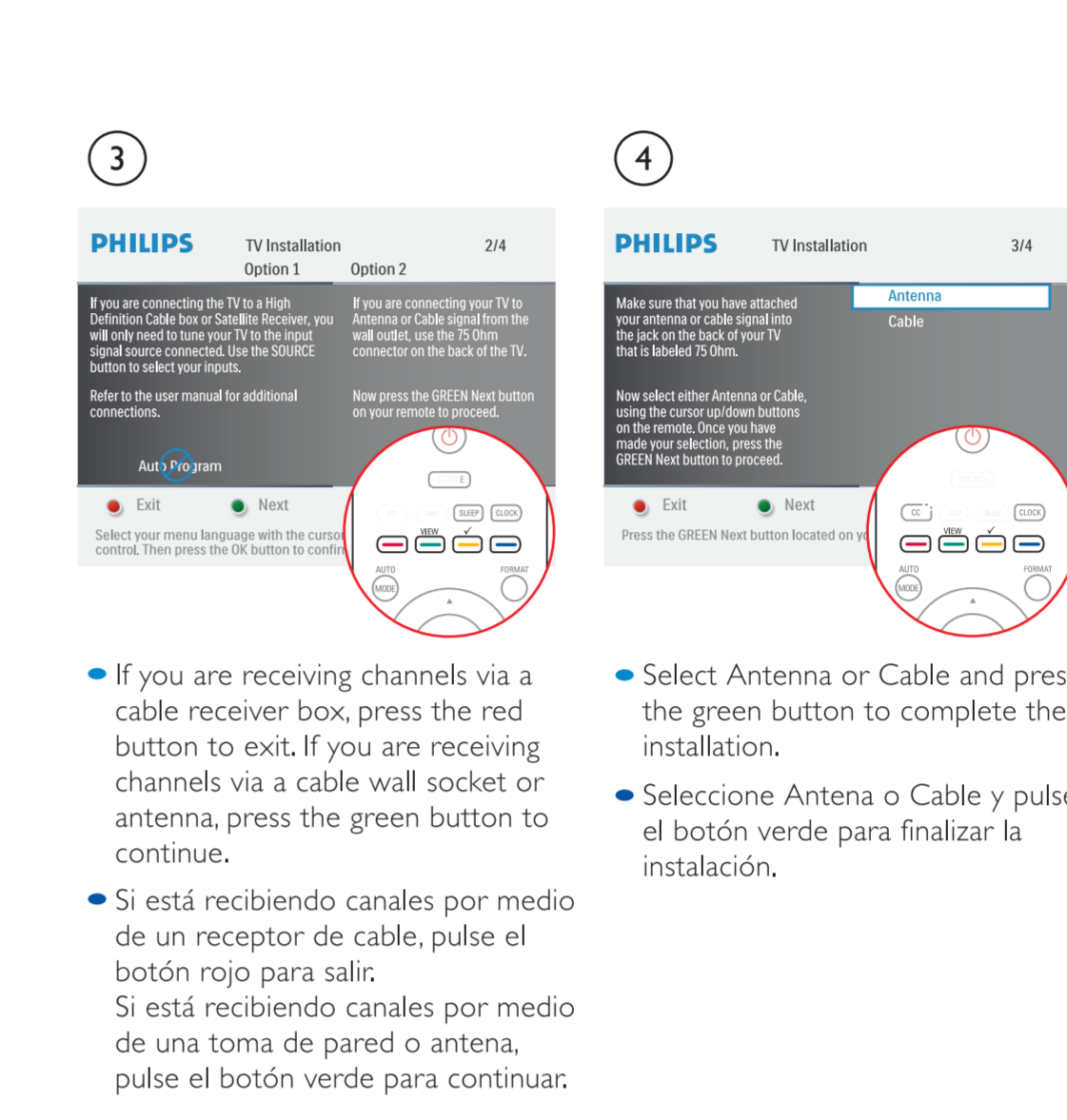
## 9-a First time setup

• Primera instalación



- Press the green button to proceed with the installation.
- Pulse el botón verde para continuar con la instalación.
- Press **▲** or **▼** and **OK** to select your language. Press the green button to continue with the installation.
- Pulse **▲** o **▼** y **OK** para seleccionar su idioma. Pulse el botón verde para continuar con la instalación.

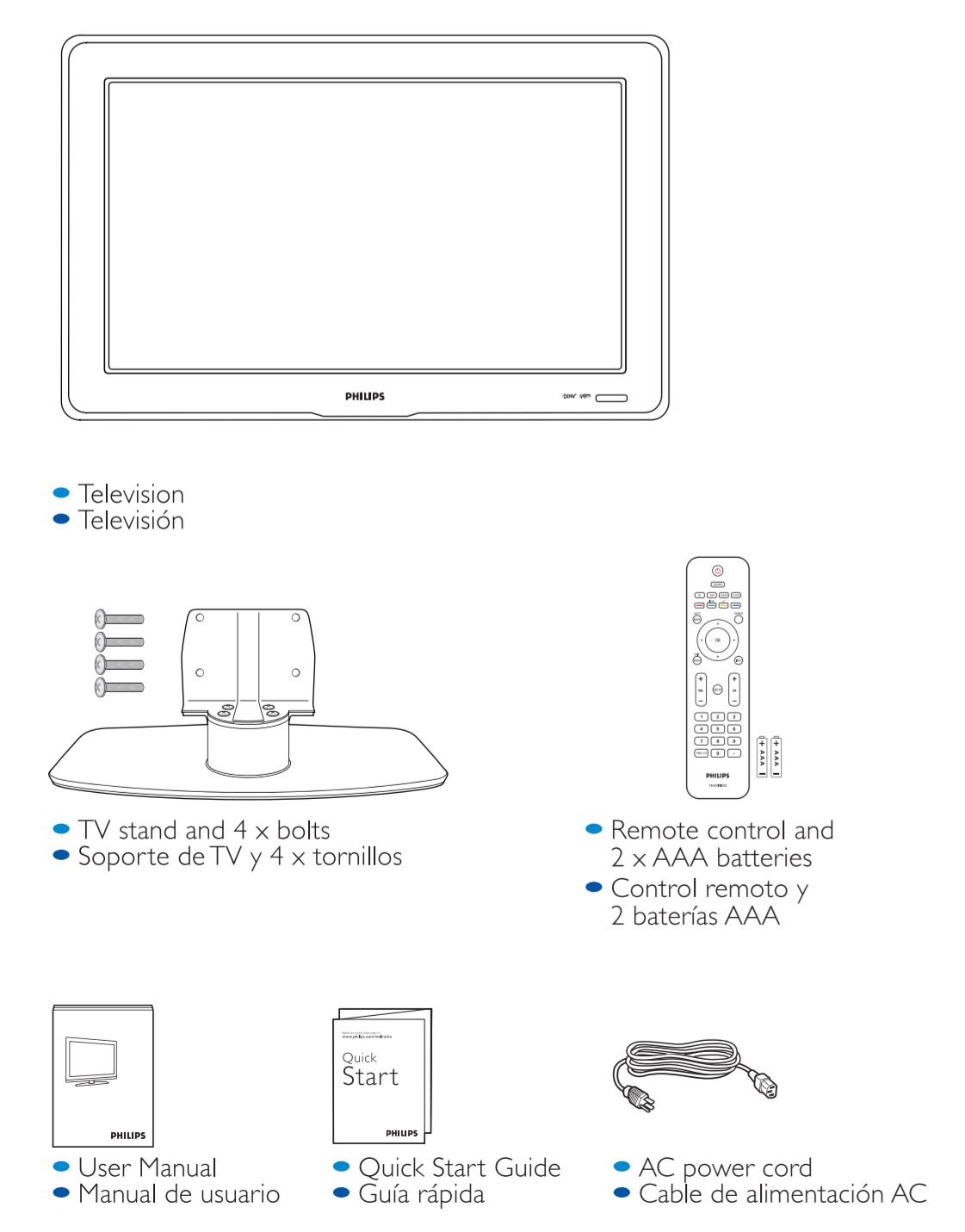
## 9-b



- If you are receiving channels via a cable receiver box, press the red button to exit. If you are receiving channels via a cable wall socket or antenna, press the green button to continue.
- Si está recibiendo canales por medio de un receptor de cable, pulse el botón rojo para salir. Si está recibiendo canales por medio de una toma de pared o antena, pulse el botón verde para continuar.
- Select Antenna or Cable and press the green button to complete the installation.
- Seleccione Antena o Cable y pulse el botón verde para finalizar la instalación.

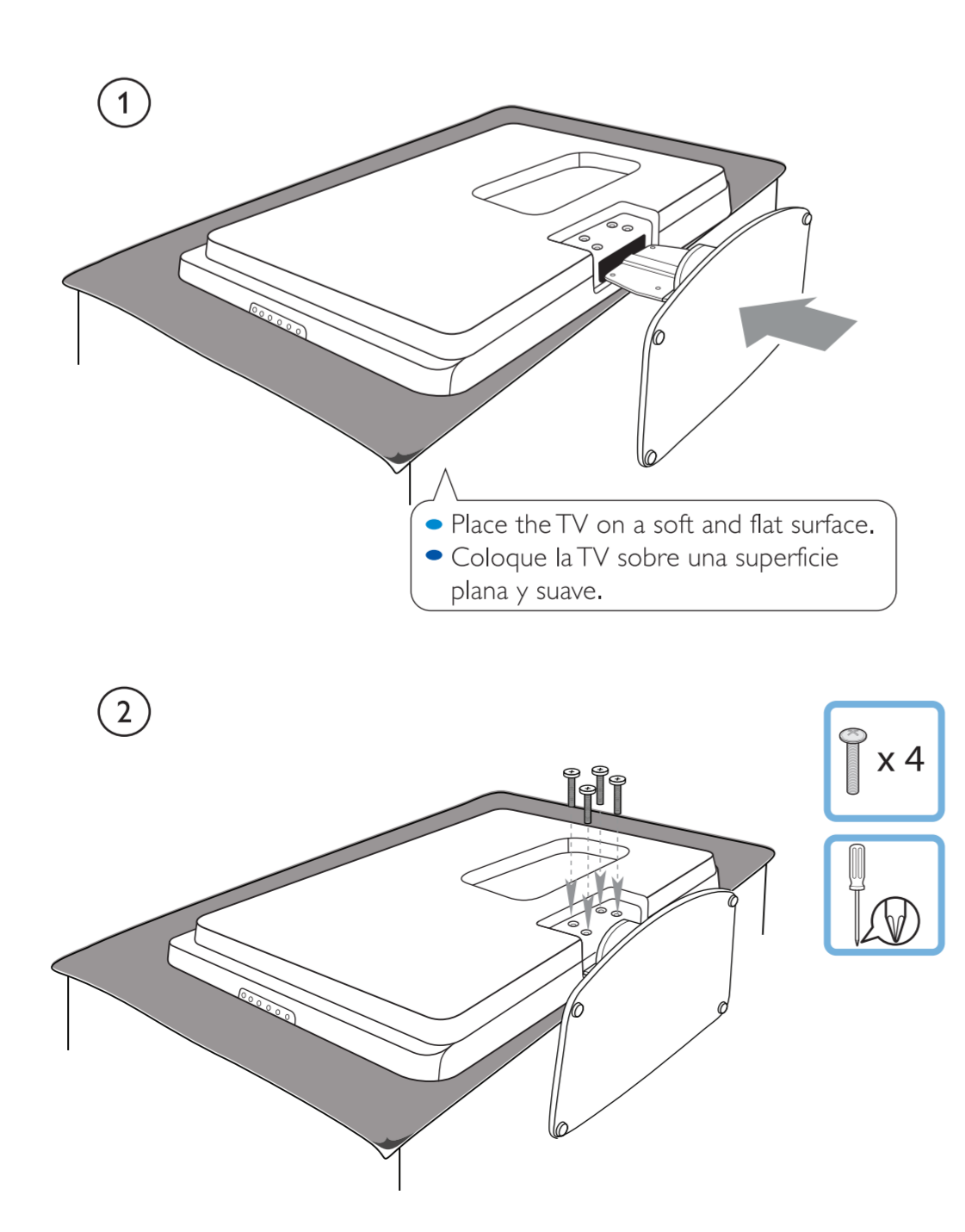
## What's in the box

• Qué hay en la caja



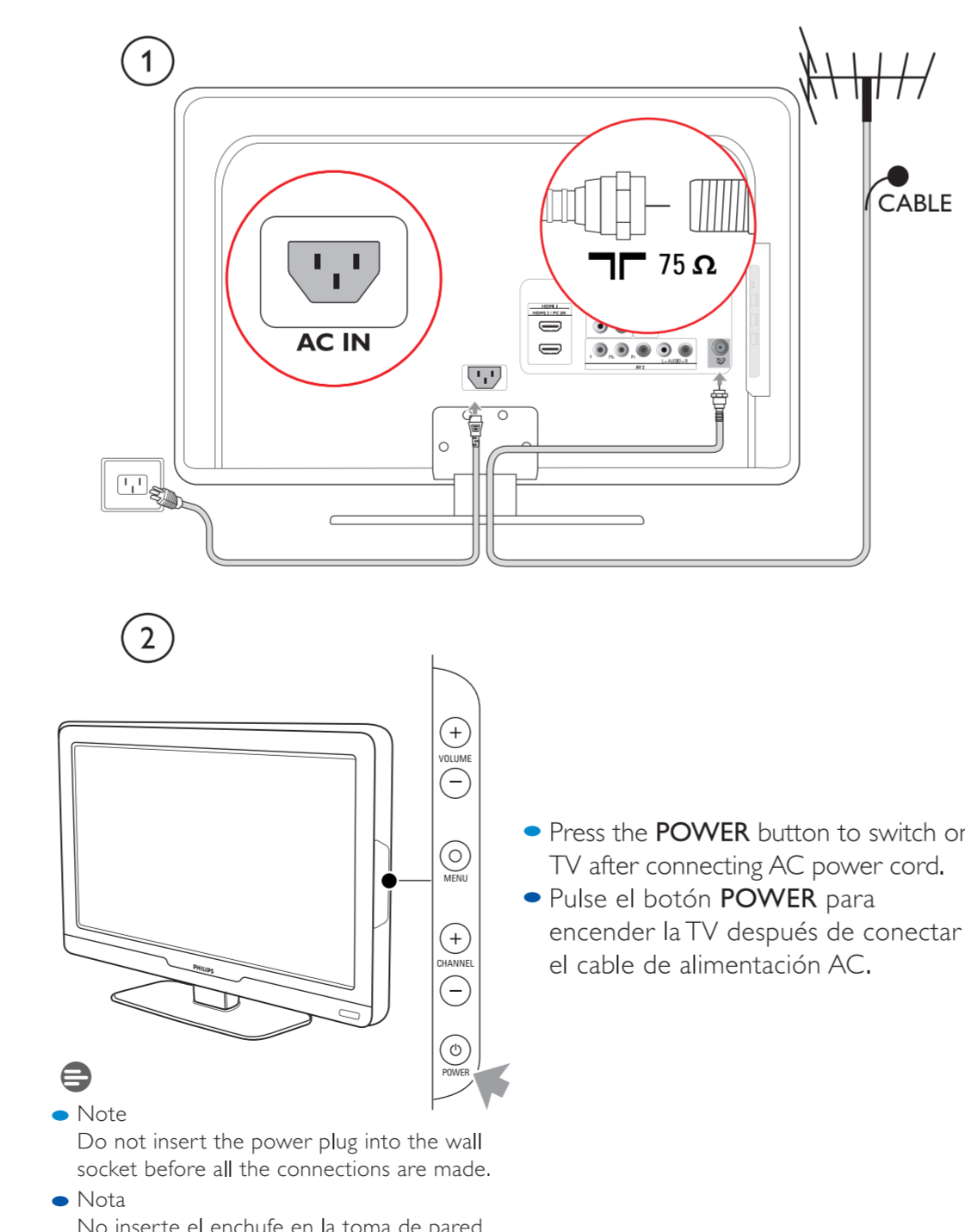
## 1 Mounting the TV stand

• Montaje del soporte de TV



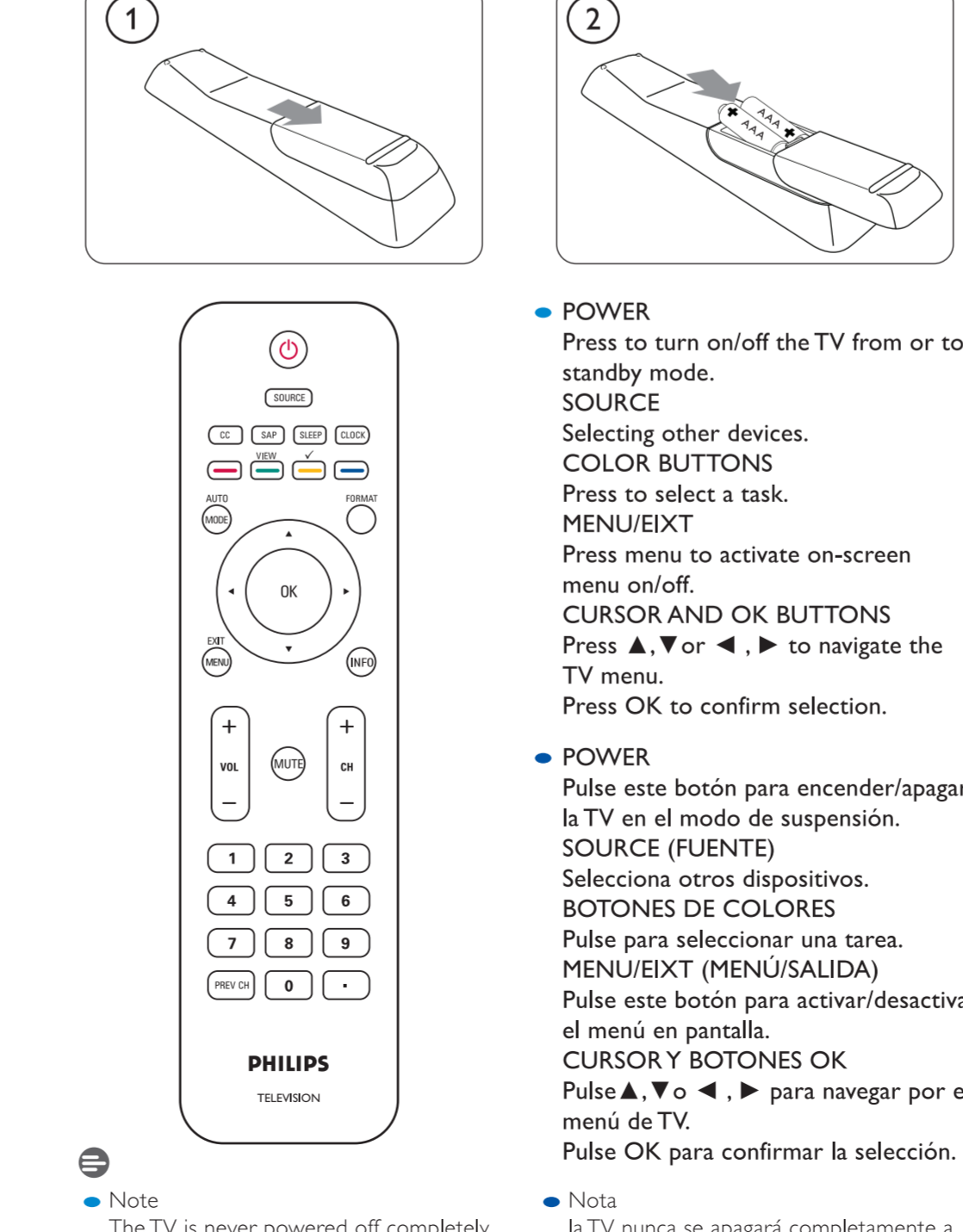
## 2 Power and antenna

• Alimentación y antena



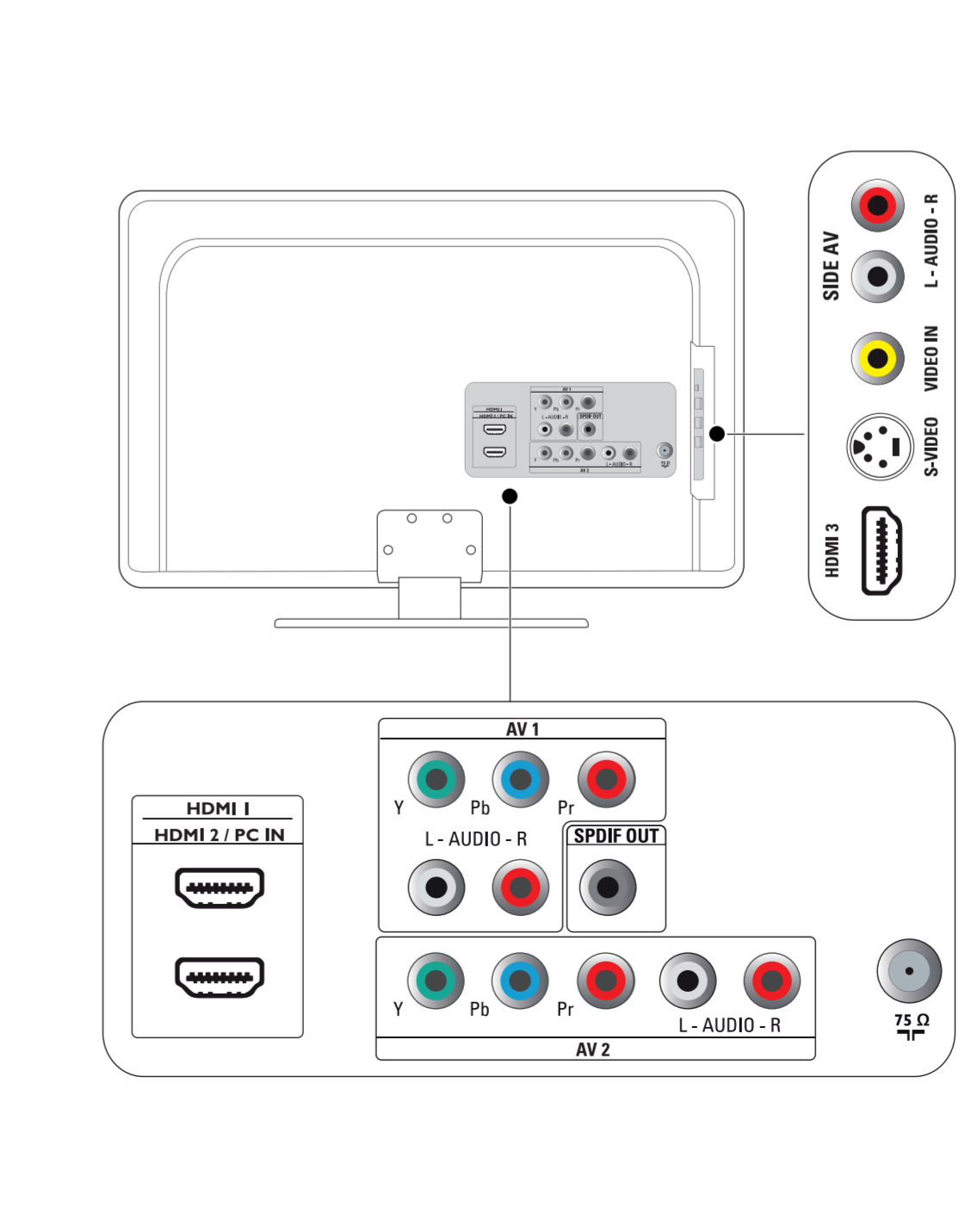
## 3 Remote control

• Control remoto



## 4 Rear and side connectors

• Conectores traseros y laterales



## 5 Blu-ray Disc player, HD game console

• Reproductor de discos Blu-ray, consola de juegos HD

