

Philips
Professional LCD TV

32" PrimeSuite

LCD DVB-T/C MPEG 2/4

32HFL4373D



The ideal TV for premium or interactive use

Philips Hotel LCD TV

With this energy efficient Hotel LCD TV, you will enjoy all the benefits of interactive television and premium hotel features. Simply link our TV to the system of your choice for the best viewing experience and cost efficient solution.

Advanced hotel features and future proof

- Serial Xpress Protocol for interactive systems
- VSecure for digital content protection in hotels
- Instant Initial Cloning for quick installation
- Integrated Connectivity Panel
- MyChoice compatibility for recurring revenues

Differentiating guest experience

- Hotel Scenea for a tailored info and start-up channel
- Theme TV for easy location of guests' own national channels
- Integrated clock display with wake-up and message alarm
- Advanced EPG and channel list

Sustainable and safe

- Low power consumption
- Green Button allows guest to save even more energy
- Eco-friendly design and flame-retardant housing

PHILIPS
sense and simplicity

Highlights

Serial Xpress Protocol (SXP)

The TV can be connected to external decoders and set-top boxes of all major interactive system providers, through the Serial Xpress Protocol (SXP).

Instant Initial Cloning

For initial TV installations, Instant Initial Cloning will save you 3-5 minutes per TV simply because the USB files are automatically read and copied to the TV without having to use the TV menu. Instant Initial Cloning allows you to significantly reduce installation time and cost.

VSecure

To show HD premium content to the guest there is a need for strict content security precautions from the content industry. Philips has developed a total solution for HD content security in hotels, consisting of VSecure for HD content protection and NexGuard for HD forensic watermarking.

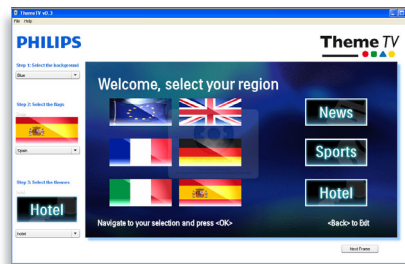
Hotel Scenea

Hotel Scenea allows you to select and store images on the TV that can be displayed as a start-up or info channel.

Integrated Connectivity Panel

The Integrated Connectivity Panel allows your guests to seamlessly connect their personal devices to your TV without the need for an external Connectivity Panel.

Theme TV



Theme TV offers an advanced user interface that enables your guests to navigate the guest menu to find their own country's channels, news and hotel information easily without the need of an interactive entertainment system.

MyChoice compatible

MyChoice offers a simple and low-cost way to offer your guests premium TV channels. At the same time it delivers an additional revenue stream which allows you to recover your initial TV investment.

Green Button

With the Green Button guests have the option to save even more energy on the TV by opting

for a higher backlight dimming or by switching off the screen when listening to radio. Another way to reduce a hotel's operating costs while involving guests directly.

Integrated clock display

The built-in clock display, which is also a wake-up alarm, eliminates the need to invest in an additional clock with cables and connections in the room.

Eco-friendly design

Sustainability is integral to the way Philips does business. Philips TVs are designed and produced according to our EcoDesign principles aimed at minimising overall environmental impact, through lower power consumption, removal of hazardous substances, lower weight, more efficient packaging and better recyclability. Philips TVs also have a special housing of flame-retardant material. Independent tests carried out by emergency fire services have shown that whereas TVs can sometimes intensify fires caused by external sources, Philips TVs will not contribute to a fire.

Advanced EPG and channel list

The attractive EPG and channel list include intuitive buttons with clear guiding graphics to easily locate your favourite channels.



Specifications

Picture/Display

- Diagonal screen size: 32 inch / 81 cm
- Aspect ratio: Widescreen
- Display screen type: LCD WXGA+ Active Matrix TFT
- Panel resolution: 1366 x 768p
- Brightness: 400 cd/m²
- Response time (typical): 6 ms
- Picture enhancement: 3/2 - 2/2 motion pull down, 3D Combfilter, Active Control, Colour Enhancement, Colour Transient Improvement, Digital Noise Reduction, Luminance Transient Improver, Progressive scan, Sharpness Adjustment, 3D MA deinterlacing, Automatic skin tone correction, Dynamic contrast enhancement, 1080p 24/25/30 Hz processing, 1080p 50/60 Hz processing, Pixel Plus HD
- Dynamic screen contrast: 50,000:1
- Screen enhancement: Anti-Reflection coated screen
- Viewing angle: 178° (H)/178° (V)
- Colour cabinet: High gloss black deco front with black cabinet

Supported Display Resolution

Video formats

| Resolution | Refresh rate |
|------------|-----------------------|
| 480i | 60 Hz |
| 480p | 60 Hz |
| 576i | 50 Hz |
| 576p | 50 Hz |
| 1080i | 50, 60 Hz |
| 720p | 50, 60 Hz |
| 1080p | 24, 50, 60 Hz |
| 1080p | 24, 25, 30, 50, 60 Hz |

Computer formats

| Resolution | Refresh rate |
|-------------|--------------|
| 640 x 480 | 60 Hz |
| 800 x 600 | 60 Hz |
| 1024 x 768 | 60 Hz |
| 1280 x 1024 | 60 Hz |
| 1280 x 720 | 60 Hz |
| 1280 x 768 | 60 Hz |
| 1360 x 768 | 60 Hz |

Tuner/Reception/Transmission

- Aerial Input: 75 ohm coaxial (IEC75)
- Number of Pre-set Channels: 999
- Tuner bands: Hyperband, S-Channel, UHF, VHF

- TV system: PAL I, PAL B/G, SECAM B/G, SECAM L/L', DVB COFDM 2K/8K
- Video Playback: PAL, SECAM, NTSC
- Digital TV: DVB-T MPEG4, DVB-C MPEG4

Sound

- Output power (RMS): 2 x 5 W
- Sound System: Nicam Stereo
- Sound Enhancement: Auto Volume Leveller, Incredible Surround, Smart Sound

Loudspeakers

- Built-in speakers: 2

Connectivity

- Number of Scarts: 1
- Number of HDMI connections: 4
- Ext 1 Scart: Audio L/R, RGB, CVBS in
- Front/Side connections: USB 2.0, HDMI v1.3
- HDMI 1: HDMI v1.3
- EasyLink (HDMI-CEC): One touch play, System standby
- Other connections: S/PDIF out (coaxial), PC-in VGA + Audio L/R in, Bathroom speaker out, Common Interface Plus (CI+)
- Connectivity Enhancements: Fast Infrared loop through, Power on scart, Serial Xpress interface, USB2.0

Convenience

- Ease of Installation: Plug and Play, Advanced Hotel Mode, Automatic Tuning System (ATS), Fine Tuning, PLL Digital Tuning, Automatic Channel Install (ACI), Auto Programme Naming, Autostore, Cloning of TV settings via USB, Installation menu locking, Security menu access, Keyboard lock-out, Programme Name
- Ease of Use: Auto Volume Leveller (AVL), 1 channel list analogue/digital, On-Screen Display, Programme List, Side Control, Graphical User Interface
- Comfort: Hotel Guest features, Welcome message, Switch on channel, Volume limitation, Sleep timer, Auto power on, Green/Fast startup, Message indicator
- Interactive hotel features: Block automatic channel update, Block over-the-air SW download, Connectivity panel compatible, Vsecure, MyChoice, SmartInstall, ThemeTV

- Prison mode: Txt, MHEG, USB, EPG, Sub block
- Clock: Sleep Timer, Dimmable, Integrated LCD Clock Display, Wake-up Clock
- Teletext: 1000-page Hypertext
- Teletext enhancements: Fast text, Programme information Line
- Electronic Programme Guide: 8-day Electronic Programme Guide, Now + Next EPG
- Screen Format Adjustments: Movie expand 16:9, Widescreen, Super Zoom, Auto Format
- Remote control type: 22AV1104A/10 (RC6)
- Remote Control: low battery detection, battery anti-theft protection
- Firmware upgradeable: Firmware upgradeable via USB, Firmware upgradeable via RF
- Other convenience: Kensington lock
- Clock Enhancements: Synchro Time via TXT/DVB

Healthcare

- Control: Multi remote control
- Convenience: Headphone out, Independent main speaker mute
- Safety: Double isolation Class II

Multimedia Applications

- Multimedia connections: USB
- Playback Formats: MP3, JPEG Still pictures, Slideshow files (.alb)
- Video Playback Formats: H264/MPEG-4 AVC

Power

- Mains power: 220-240 V, 50/60 Hz
- Power consumption (typical): 70 W
- Ambient temperature: 5°C to 40°C

Green Specifications

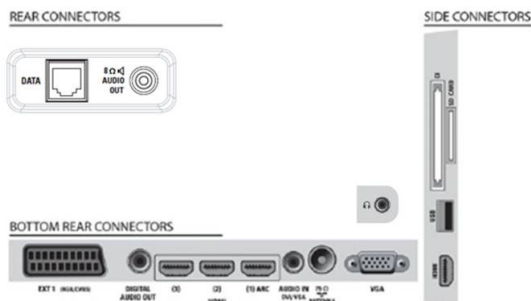
- Safety: Flame-retardant housing
- Low Power Standby
- SmartPower Eco

Dimensions

- Set dimensions (W x H x D): 795.6 x 508.4 x 93 mm
- Set dimensions with stand (W x H x D): 795.6 x 557.6 x 221.4 mm
- Box dimensions (W x H x D): 1000 x 610 x 160 mm
- Product weight: 8.35 kg
- Product weight (+stand): 10 kg
- VESA wall mount compatible: 200 x 200 mm

Accessories

- Included accessories: Remote Control, Batteries for remote control, Power cord, Tabletop stand, Warranty Leaflet
- Optional accessories: Set up remote 22AV8573/00, Wall mount (tilt) 22AV3200/10



Issue date 2012-10-12

Version: 2.0.5

12 NC: 8670 000 75942
EAN: 87 12581 60242 0

© 2012 Koninklijke Philips Electronics N.V.
All Rights reserved.

Specifications are subject to change without notice.
Trademarks are the property of Koninklijke Philips Electronics N.V. or their respective owners.

www.philips.com