



Philips  
Professional LCD TV

**32" PrimeSuite**  
LCD  
DVB-T/C MPEG 2/4

**32HFL4373D**



## The ideal TV for premium or interactive use

### Philips Hotel LCD TV

With this energy efficient Hotel LCD TV, you will enjoy all the benefits of interactive television and premium hotel features. Simply link our TV to the system of your choice for the best viewing experience and cost efficient solution.

#### **Advanced hotel features and future proof**

- Serial Xpress Protocol for interactive systems
- VSecure for digital content protection in hotels
- Instant Initial Cloning for quick installation
- Integrated Connectivity Panel
- MyChoice compatibility for recurring revenues

#### **Differentiating guest experience**

- Hotel Scenea for a tailored info and start-up channel
- Theme TV for easy finding of guests' own channels
- Integrated clock display with wake up and message alarm
- Advanced EPG and channel list

#### **Sustainable and safe**

- Low power consumption
- Green Button allows guest to save even more energy
- Eco-friendly design & flame retardant housing

# PHILIPS

# Highlights

## Serial Xpress Protocol (SXP)

The TV can be connected to external decoders and set-top boxes of all major interactive system providers, through the Serial Xpress Protocol (SXP).

## Instant Initial Cloning

For initial TV installations, Instant Initial Cloning will save you 3-5 minutes per TV simply because the USB files are automatically read and copied to the TV without having to use the TV menu anymore. Instant Initial Cloning allows you to significantly reduce installation time and cost.

## VSecure

To show HD premium content to the guest there is a need for strict content security precautions from the content industry. Philips developed a total solution for HD content security in hotels, consisting of VSecure for HD content protection and NexGuard for HD forensic watermarking.

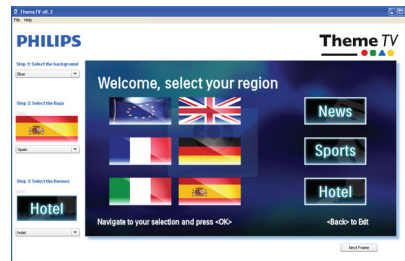
## Hotel Scenea

Hotel Scenea allows you to select and store image on the TV which can be displayed as start-up or info channel.

## Integrated Connectivity Panel

The Integrated Connectivity Panel allows your guests to seamlessly connect their personal devices to your TV without the need of any external Connectivity Panel.

## Theme TV



Theme TV offers an advanced user interface that gives your guests the opportunity to navigate in the guest menu to find their own country channels, news and hotel information easily without the need of an interactive entertainment system.

## MyChoice compatible



MyChoice offers a simple and low-cost way to offer your guests premium TV channels. At the same time it delivers an additional revenue stream which allows you to recover your initial TV investment.

## Green Button

With the Green Button guests have the possibility to save even more energy on the TV by opting for a higher backlight dimming or by switching off the screen when listening to radio. Another way to reduce a hotel's operating cost while involving guests directly.

## Integrated clock display

The built-in clock display, which is also a wake-up alarm, eliminates the need and investment for an additional clock with cables and connections in the room.

## Eco-friendly design

Sustainability is integral to the way Philips does business. Philips TVs are designed and produced according to our EcoDesign principles aimed at minimizing overall environmental impact, through lower power consumption, removal of hazardous substances, lower weight, more efficient packaging and better recyclability. Philips TVs also have a special housing of flame retardant material. Independent tests carried out by emergency fire services have shown that whereas TVs can sometimes intensify fires caused by external sources, Philips TVs will not contribute to the fire.

## Advanced EPG and channel list

The attractive EPG and channel list includes intuitive buttons with clear guiding graphics for easily finding your favorite channels.

# Specifications

## Picture/Display

- Diagonal screen size: 32 inch / 81 cm
- Aspect ratio: Widescreen
- Display screen type: LCD WXGA+ Active Matrix TFT
- Panel resolution: 1366 x 768p
- Brightness: 400 cd/m<sup>2</sup>
- Response time (typical): 6 ms
- Picture enhancement: 3/2 - 2/2 motion pull down, 3D Combfilter, Active Control, Color Enhancement, Color Transient Improvement, Digital Noise Reduction, Luminance Transient Improver, Progressive scan, Sharpness Adjustment, 3D MA deinterlacing, Automatic skin tone correction, Dynamic contrast enhancement, 1080p 24/25/30Hz processing, 1080p 50/60Hz processing, Pixel Plus HD
- Dynamic screen contrast: 50,000:1
- Screen enhancement: Anti-Reflection coated screen
- Viewing angle: 178° (H) / 178° (V)
- Color cabinet: High gloss black deco front with black cabinet

## Supported Display Resolution

### Video formats

Resolution	Refresh rate
480i	60Hz
480p	60Hz
576i	50Hz
576p	50Hz
1080i	50, 60Hz
720p	50, 60Hz
1080p	24, 50, 60Hz
1080p	24, 25, 30, 50, 60Hz

### Computer formats

Resolution	Refresh rate
640 x 480	60Hz
800 x 600	60Hz
1024 x 768	60Hz
1280 x 1024	60Hz
1280 x 720	60Hz
1280 x 768	60Hz
1360 x 768	60Hz

## Tuner/Reception/Transmission

- Aerial Input: 75 ohm coaxial (IEC75)
- Number of Preset Channels: 999
- Tuner bands: Hyperband, S-Channel, UHF, VHF

- TV system: PAL I, PAL B/G, SECAM B/G, SECAM L/L', DVB COFDM 2K/8K
- Video Playback: PAL, SECAM, NTSC
- Digital TV: DVB-T MPEG4, DVB-C MPEG4

## Sound

- Output power (RMS): 2 x 5W
- Sound System: Nicam Stereo
- Sound Enhancement: Auto Volume Leveller, Incredible Surround, Smart Sound

## Loudspeakers

- Built-in speakers: 2

## Connectivity

- Number of Scarts: 1
- Number of HDMI connections: 4
- Ext 1 Scart: Audio L/R, RGB, CVBS in
- Front / Side connections: USB 2.0, HDMI v1.3
- HDMI 1: HDMI v1.3
- EasyLink (HDMI-CEC): One touch play, System standby
- Other connections: S/PDIF out (coaxial), PC-in VGA + Audio L/R in, Bathroom speaker out, Common Interface Plus (CI+)
- Connectivity Enhancements: Fast Infrared loop through, Power on scart, Serial Xpress interface, USB2.0

## Convenience

- Ease of Installation: Plug & Play, Advanced Hotel Mode, Automatic Tuning System (ATS), Fine Tuning, PLL Digital Tuning, Automatic Channel Install(ACI), Auto Program Naming, Autostore, Cloning of TV settings via USB, Installation menu locking, Security menu access, Keyboard lock-out, Program Name
- Ease of Use: Auto Volume Leveller (AVL), 1 channel list analog/digital, On Screen Display, Program List, Side Control, Graphical User Interface
- Comfort: Hotel Guest features, Welcome message, Switch on channel, Volume limitation, Sleep timer, Auto power on, Green/Fast startup, Message indicator
- Interactive hotel features: Block automatic channel update, Block over-the-air SW download, Connectivity panel compatible, Vsecure, MyChoice, SmartInstall, ThemeTV

- Prison mode: Txt, MHEG, USB, EPG, Sub block
- Clock: Sleep Timer, Dimmable, Integrated LCD Clock Display, Wake up Clock
- Teletext: 1000 page Hypertext
- Teletext enhancements: Fast text, Program information Line
- Electronic Program Guide: 8 day Electronic Program Guide, Now + Next EPG
- Screen Format Adjustments: Movie expand 16:9, Widescreen, Super Zoom, Auto Format
- Remote control type: 22AV1104A/10 (RC6)
- Remote Control: low battery detection, battery anti-theft protection
- Firmware upgradeable: Firmware upgradeable via USB, Firmware upgradeable via RF
- Other convenience: Kensington lock
- Clock Enhancements: Synchro Time via TXT/DVB

## Healthcare

- Control: Multi remote control
- Convenience: Headphone out, Independent main speaker mute
- Safety: Double isolation Class II

## Multimedia Applications

- Multimedia connections: USB
- Playback Formats: MP3, JPEG Still pictures, Slideshow files (.alb)
- Video Playback Formats: H264/MPEG-4 AVC

## Power

- Mains power: 220-240V, 50/60Hz
- Power consumption (typical): 56 W
- Ambient temperature: 5 °C to 40 °C
- Annual energy consumption: 139 kWh
- Standby power consumption: 0.3

## Green Specifications

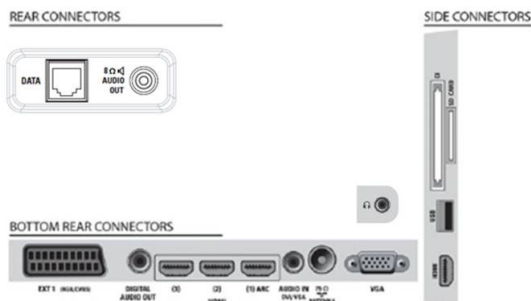
- Safety: Flame retardant housing
- Low Power Standby
- SmartPower Eco

## Dimensions

- Set dimensions (W x H x D): 795.6 x 508.4 x 93 mm
- Set dimensions with stand (W x H x D): 795.6 x 557.6 x 221.4 mm
- Box dimensions (W x H x D): 1000 x 610 x 160 mm
- Product weight: 8.35 kg
- Product weight (+stand): 10 kg
- VESA wall mount compatible: 200 x 200 mm

## Accessories

- Included accessories: Remote Control, Batteries for remote control, Power cord, Table top stand, Warranty Leaflet
- Optional accessories: Set up remote 22AV8573/00, Wallmount (tilt) 22AV3200/10



Issue date 2019-05-08

Version: 4.0.5

12 NC: 8670 000 75942  
EAN: 87 12581 60242 0

© 2019 Koninklijke Philips N.V.  
All Rights reserved.

Specifications are subject to change without notice.  
Trademarks are the property of Koninklijke Philips N.V.  
or their respective owners.

[www.philips.com](http://www.philips.com)