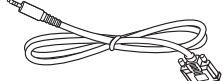


Power Cord



RS232 Cable



RS232 Daisy Chain Cable



IR Sensor Cable



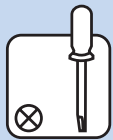
Philips logo plate



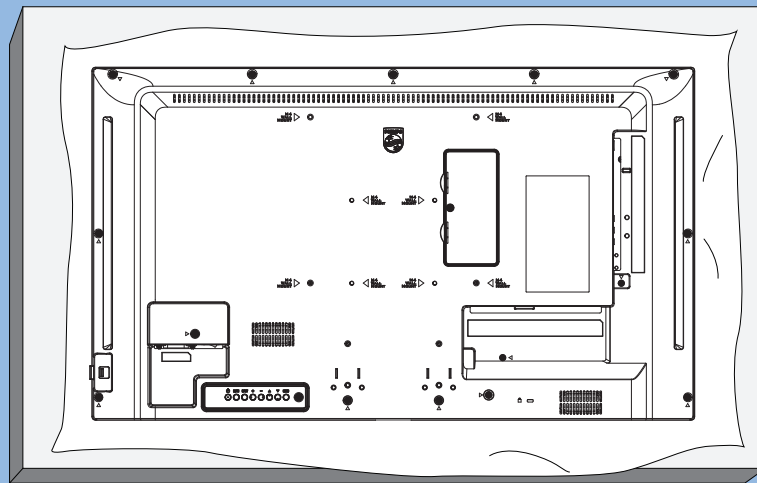
USB Cover x 1

* Differences according to regions.

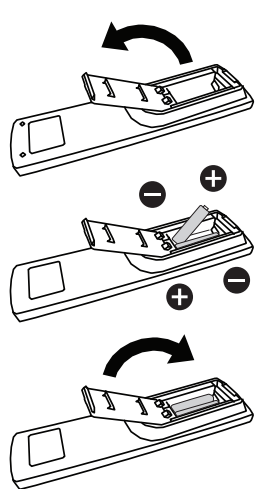
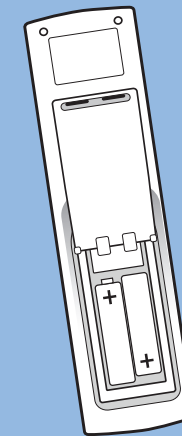
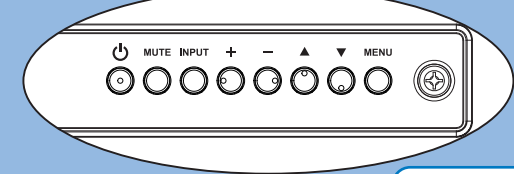
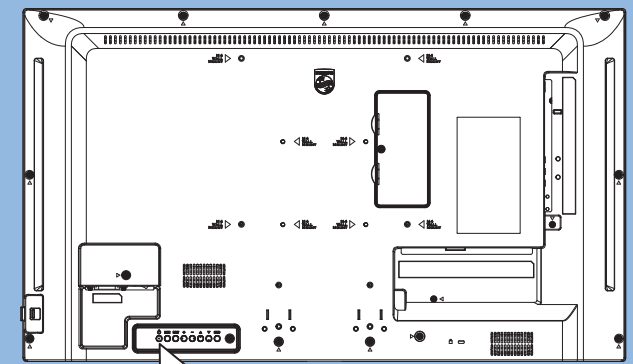
Display design and accessories may differ from those illustrated above.



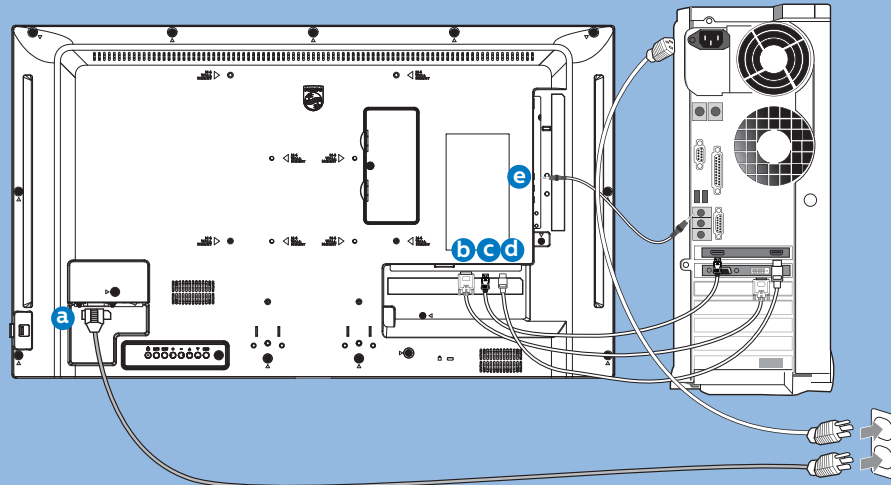
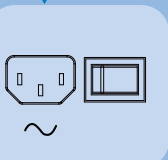
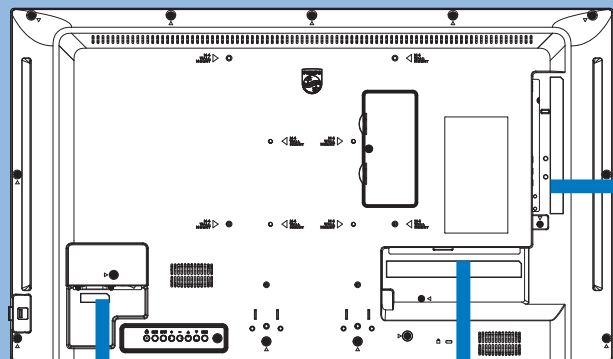
1



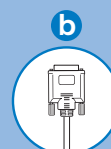
2



3



AC IN



DVI



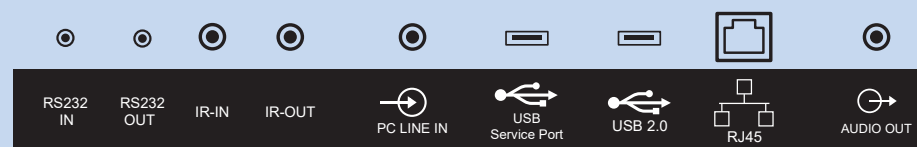
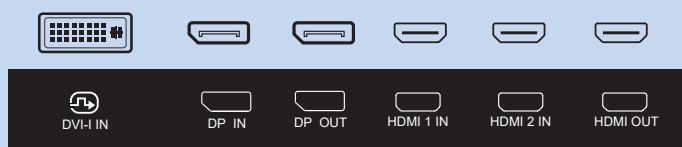
DP



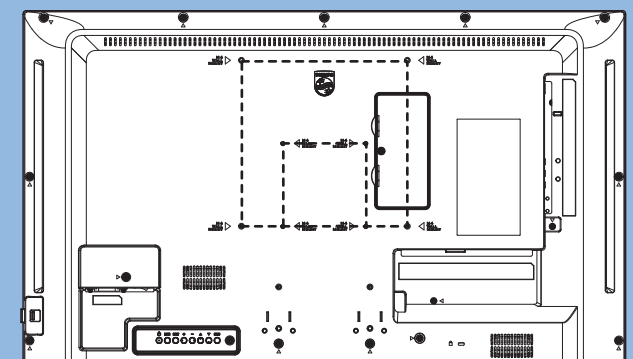
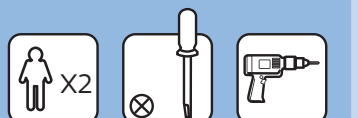
HDMI



AUDIO

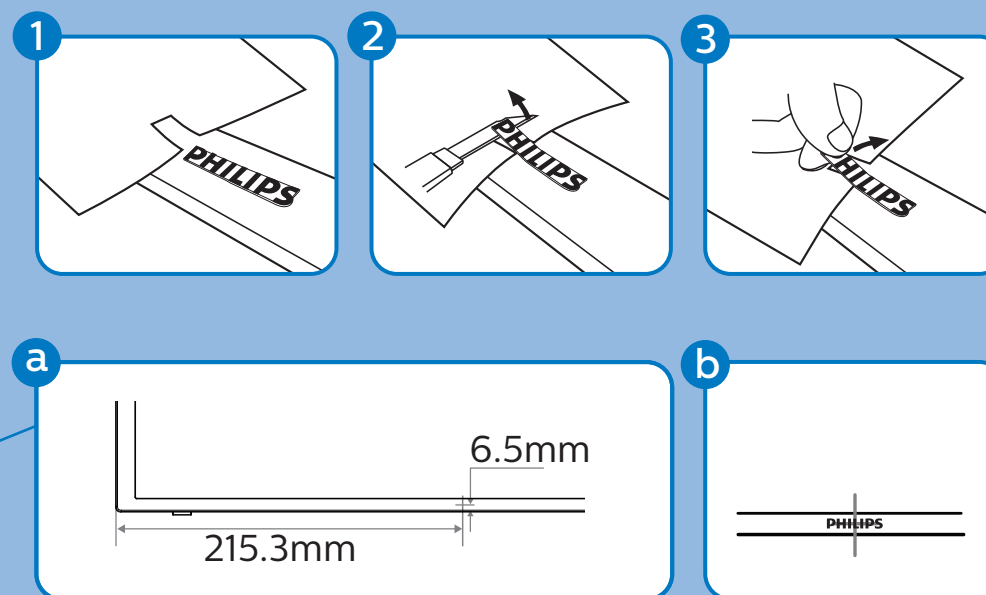
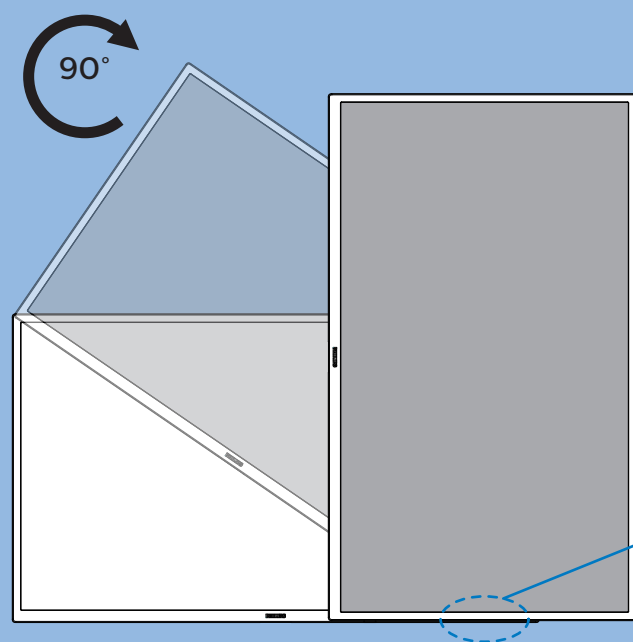


4



M4 * (10+X) mm
(X=Thickness of Wall mount BKT)
32BDL4510D: 100mmx100mm
200mmx200mm

5

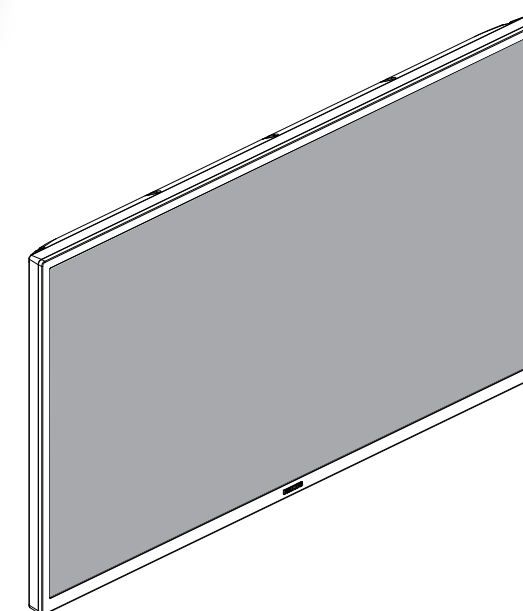


PHILIPS

Professional
Display Solutions

D Line

32BDL4510D



Quick Start



Please check out the website below for more product information.
www.philips.com/signagesolutions-support



Envision Peripherals Inc.
490 N McCarthy Blvd, Suite #120
Milpitas, CA 95035
USA

2021 © TOP Victory Investments Ltd. All rights reserved.
This product has been manufactured by and is sold under the responsibility of Top Victory Investments Ltd., and Top Victory Investments Ltd. is the warrantor in relation to this product. Philips and the Philips Shield Emblem are registered trademarks of Koninklijke Philips N.V. and are used under license.

Specifications are subject to change without notice.

Version: V1.00 2020-12-27



Q41G32M181386A