



Philips Brilliance
LCD monitor with USB-C
Dock

P Line
32 (viewable 31.5" / 80 cm)
2560 x 1440 (QHD)

Brilliance



328P6AUBREB

Simplify your connections

with USB-C docking monitor

This Philips Brilliance monitor with USB-C docking replaces cable clutter. View QHD images, secure connect to intranet, re-charge your notebook. All at the same time with a single USB-C cable.

Single cable USB-C connection

- Built in USB-C docking station
- Connect your notebook with one USB-C cable
- Power and re-charge compatible notebook from the monitor
- View Crystalclear QHD 2560x1440 images
- USB 3.1 high speed data transfer
- Built in RJ-45 ethernet gives data security

True-to-life colorful images

- High Dynamic Range (HDR) for more lifelike colorful visuals
- Pro color standards 99% AdobeRGB, 100% sRGB
- 10-bit IPS technology for full colors and wide viewing angle
- LowBlue Mode for easy on-the-eyes productivity

Sustainable Eco-design

- 100% recyclable packaging
- PVC-BFR free housing

PHILIPS

Highlights

Built in USB-C docking station



This Philips display features a built-in USB type-C docking station with power delivery. Its slim, reversible USB-C connector allows for easy, one-cable docking. Simplify by connecting all your peripherals like keyboard, mouse and your RJ-45 Ethernet cable to the monitor's docking station. Simply connect your notebook and this monitor with a single USB-C cable to watch high-resolution video and transfer super-speed data, while powering up and re-charging your notebook at the same time.

Power & re-charge notebook

This monitor features a built in USB-C connector which meets USB Power Delivery standard. With intelligent and flexible power management, you can now power up and or re-charge your compatible* Notebook directly from the Monitor using a single USB-C cable.

Crystalclear QHD images

These Philips screens deliver Crystalclear, Quad HD 2560x1440 or 2560x1080 pixel images. Utilizing high performance panels with high density pixel count, enabled by high bandwidth sources like Displayport, HDMI, Dual link DVI, these new displays will make your images and graphics come alive. Whether you are demanding professional requiring extremely detailed information for CAD-CAM solutions, using 3D graphic applications or a financial wizard working on huge spreadsheets, Philips displays will give you Crystalclear images.

High Dynamic Range (HDR)



High Dynamic Range delivers a dramatically different visual experience. With astonishing brightness, incomparable contrast and captivating color, images come to life with much greater brightness while also featuring much deeper, more nuanced darks. It renders a fuller palette of rich new colors never before seen on display, giving you a visual experience that engages your senses and inspires emotions.

AdobeRGB



Meeting professional industry-standard color, this monitor offers Adobe 99% and 100% sRGB color spectrum. The enhanced color rendering range of Adobe RGB makes it ideal for professional photo and video editing, animation, or work with color-critical projects. You can now be confident that your color is consistent and true to the original image.

10-bit IPS display technology



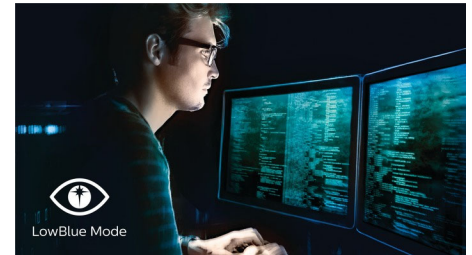
8-bit

10-bit

This Philips monitor uses a native 10-bit wide view angle display. This enables you to view

consistent and smooth images with a color depth of 1.07 billion colors, vs an 8-bit display which is limited to only 16 million possible colors. With a suitable graphics card and appropriate software, you can now work on your color critical professional work with ease.

LowBlue Mode



Studies have shown that just as ultra-violet rays can cause eye damage, shortwave length blue light rays from LED displays can cause eye damage and affect vision over time. Developed for wellbeing, Philips LowBlue Mode setting uses a smart software technology to reduce harmful shortwave blue light.

Sustainability

Philips is committed to use sustainable, eco-friendly materials across its monitor range. All body plastic parts, metal chassis parts and packing materials use 100% recyclable materials. In selected models, we utilize >= 65% Post-Consumer Recycled plastics, ensuring reduction in waste. Strict adherence to RoHS standards ensure substantial reduction or elimination of toxic substances like Lead and Mercury. Our display housing is made up of PVC/BFR free material. For more information, please visit Philips @ <http://www.asimpleswitch.com/global/> to learn more.



Specifications

Picture/Display

- LCD panel type: IPS technology
- Backlight type: W-LED system
- Panel Size: 31.5 inch / 80.1 cm
- Display Screen Coating: Anti-Glare, 3H, Haze 25%
- Effective viewing area: 698.11 (H) x 392.69 (V)
- Aspect ratio: 16:9
- Optimum resolution: 2560 x 1440 @ 60Hz
- Pixel Density: 93 PPI
- Response time (typical): 4 ms (Gray to Gray)*
- Brightness: 450 cd/m²
- Contrast ratio (typical): 1,200:1
- SmartContrast: 50,000,000 :1
- Pixel pitch: 0.2727 x 0.2727 mm
- Viewing angle: 178° (H) / 178° (V), @ C/R > 10
- Flicker-free
- Picture enhancement: SmartImage
- Display colors: Color support 1.07 billion colors
- Color gamut (typical): Adobe RGB 99% (CIE 1976)
- HDR: DisplayHDR 400 (HDMI)
- Scanning Frequency: Horizontal: 30 - 99 KHz (VGA/DP/USB type-C); 30 - 160 KHz (HDMI) / Vertical: 56 - 76 Hz
- SmartUniformity: 96% ~ 103%
- Delta E: <2
- sRGB
- EasyRead
- LowBlue Mode

Connectivity

- Signal Input: VGA (Analog), DisplayPort 1.2, HDMI 2.0 x 1, USB-C 3.1 Gen 1 x 1, USB 3.1 Gen 1 x 2 (downstream, w/fast charging BC 1.2)*
- Sync Input: Separate Sync, Sync on Green
- Audio (In/Out): PC audio-in, Headphone out
- RJ45: Ethernet LAN up to 1G*

USB

- USB-C: Reversible plug connector
- Super speed: Data and Video transfer
- DP: Built-in Display Port Alt mode
- Power delivery: USB PD version 2.0
- USB-C max. power delivery: Upto 60watts (5V/3A; 7V/3A; 9V/3A; 12V/3A; 15V/3A; 20V/3A)

Convenience

- Built-in Speakers: 3 W x 2
- User convenience: SmartImage, Input, Brightness, Menu, Power On/Off
- Control software: SmartControl
- OSD Languages: Brazil Portuguese, Czech, Dutch, English, Finnish, French, German, Greek, Hungarian, Italian, Japanese, Korean, Polish, Portuguese, Russian, Simplified Chinese, Spanish, Swedish, Traditional Chinese, Turkish, Ukrainian
- Other convenience: Kensington lock, VESA mount

(100x100mm)

- Plug & Play Compatibility: DDC/CI, Mac OS X, sRGB, Windows 10 / 8.1 / 8 / 7

Stand

- Height adjustment: 180 mm
- Pivot: 90 degree
- Swivel: -170/+170 degree
- Tilt: -5/20 degree

Power

- ECO mode: 31.9 W (typ.)
- On mode: 23.72 W (EnergyStar test method)
- Standby mode: <0.5 W (typ.)
- Off mode: Zero watts with Zero switch
- Power LED indicator: Operation - White, Standby mode- White (blinking)
- Power supply: Built-in, 100-240VAC, 50-60Hz

Dimensions

- Product with stand(max height): 742 x 657 x 270 mm
- Product without stand (mm): 742 x 438 x 63 mm
- Packaging in mm (WxHxD): 970 x 526 x 224 mm

Weight

- Product with stand (kg): 9.70 kg
- Product without stand (kg): 6.74 kg
- Product with packaging (kg): 13.86 kg

Operating conditions

- Temperature range (operation): 0°C to 40°C °C
- Temperature range (storage): -20°C to 60°C °C
- Relative humidity: 20%-80 %
- Altitude: Operation: +12,000ft (3,658m), Non-operation: +40,000ft (12,192m)
- MTBF (demonstrated): 70,000 hrs (excluded backlight)

Sustainability

- Environmental and energy: EnergyStar 8.0, EPEAT*, RoHS
- Recyclable packaging material: 100 %
- Post consumer recycled plastic: 65%
- Specific Substances: PVC / BFR free housing, Mercury free

Compliance and standards

- Regulatory Approvals: CE Mark, FCC Class B, VCCI, RCM, BSMI, ICES-003, J-MOSS, cETLus, EPA, PSB, CU-EAC, SEMKO, SASO, KUCAS, UKRAINIAN, PSE, CECP, WEEE, TUV Ergo, TUV/ GS, CB

Cabinet

- Front bezel: Black

- Rear cover: Black
- Foot: Black
- Finish: Texture



I/O back panel connector diagram



Issue date 2022-05-16

Version: 8.0.1

12 NC: 8670 001 48461
EAN: 87 12581 74811 1

© 2022 Koninklijke Philips N.V.
All Rights reserved.

Specifications are subject to change without notice.
Trademarks are the property of Koninklijke Philips N.V.
or their respective owners.

www.philips.com

* Response time value equal to SmartResponse

* For Video transmission via USB-C, your Notebook/device must support USB-C DP Alt mode

* Activities such as screen sharing, on-line streaming video and audio over the Internet can impact your network performance. Your hardware, network bandwidth and its performance will determine overall audio and video quality.

* For USB-C power and charging function, your Notebook/device must support USB-C standard Power Delivery specifications. Please check with your Notebook user manual or manufacturer for more details.

* If your Ethernet connection seems slow, please enter OSD menu and select USB 3.0 or higher version which can support the LAN speed to 1G.

* EPEAT rating is valid only where Philips registers the product. Please visit <https://www.epeat.net/> for registration status in your country.

* The monitor may look different from feature images.