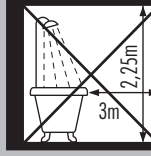




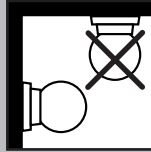
- 01- The product should only be installed indoors.
01- Produk ini hanya boleh dipasang di dalam ruangan.



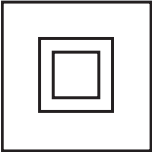
- 02- The product is not suitable for installation in bathrooms, certainly not in the specified zone.
02- Produk ini tidak sesuai untuk pemasangan di dalam kamar mandi, khususnya di zona yang tertera pada ikon.



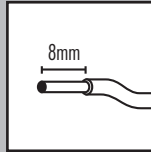
- 03- The product is suitable for mounting on normally flammable surfaces.
03- Produk ini sesuai untuk pemasangan pada permukaan yang umumnya mudah terbakar.



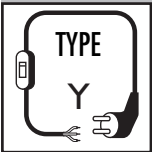
- 04- The product is only suitable for mounting on the wall.
04- Produk ini hanya sesuai untuk pemasangan di dinding.



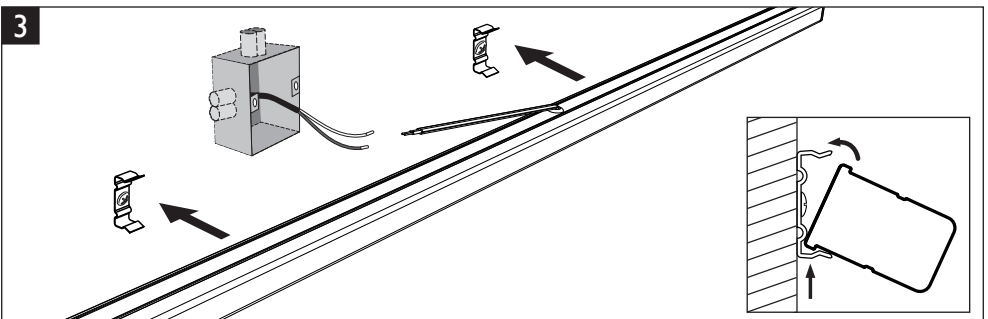
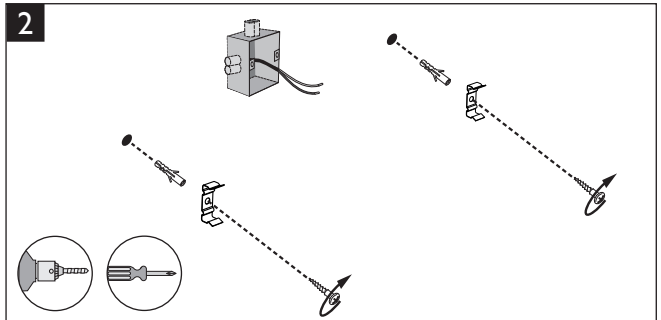
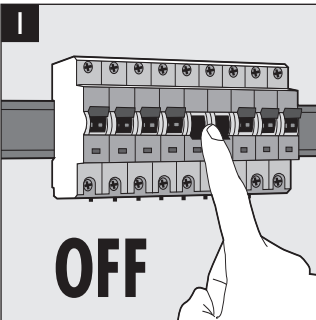
- 05- Protection class II: the product or component is provided with double or reinforced insulation.
05- Perlindungan kelas II: produk atau komponen dilengkapi dengan insulasi yang diperkuat atau ganda.



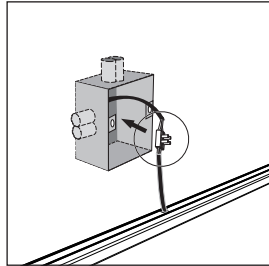
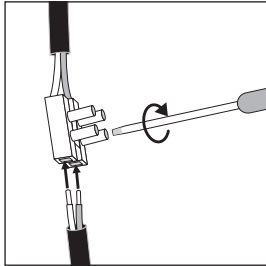
- 06- Strip the wire as indicated on the icon.
06- Kupas kabel seperti yang ditampilkan pada ikon.



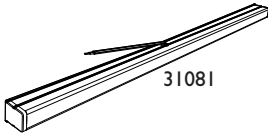
- 07- Y-connection: In case of damage to the wire, it has to be replaced only by the manufacturer, distributor or by an expert, to avoid risks.
07- Sambungan-Y: Jika kabel mengalami kerusakan, kabel harus diganti oleh produsen, distributor, atau ahli, untuk menghindari risiko.



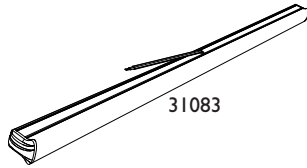
4



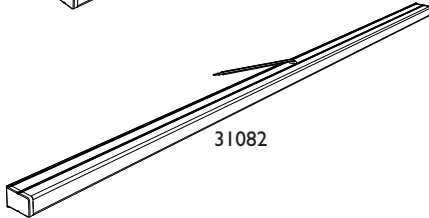
not included



31081



31083



31082



31084