



Philips
4K Ultra HD LCD monitor

E Line
27" (68.6 cm)
3840 x 2160 (4K UHD)

276E8VJSB



Magnificent view in an elegant design

The Philips 27" (68.6 cm) 4K UHD monitor gives ultra-clear picture quality. 4K UHD with wide view delivers the same ultimate clarity and lifelike visuals from any front-angle view. Flicker-free to reduce eye fatigue after prolonged use.

Superb Picture Quality

- UltraClear 4K UHD (3840 x 2160) resolution for precision
- IPS LED wide view technology for image and colour accuracy

Elegant Design

- Elegant, slim design complements your home decor
- Narrow-border display for a seamless appearance

Features designed for you

- MultiView enables simultaneous dual connect and view
- HDMI for quick digital connection
- Less eye fatigue with Flicker-Free technology
- LowBlue Mode for easy-on-the-eyes productivity

Greener every day

- Eco-friendly materials meet major international standards
- Low power consumption saves energy bills

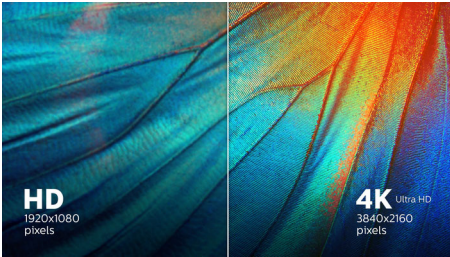
PHILIPS

4K Ultra HD LCD monitor
E Line 27" (68.6 cm), 3840 x 2160 (4K UHD)

27E8VJSB/00

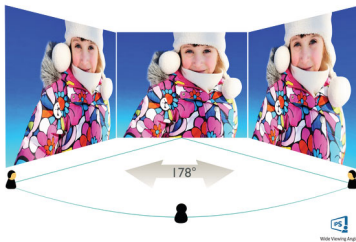
Highlights

UltraClear 4K UHD Resolution



These Philips displays utilise high-performance panels to deliver UltraClear, 4K UHD (3840 x 2160) resolution images. Whether you are a demanding professional requiring extremely detailed images for CAD solutions, a user of 3D graphics applications or a financial wizard working on huge spreadsheets, Philips displays will make your images and graphics come alive.

IPS technology



IPS displays use an advanced technology that gives you extra-wide viewing angles of 178/178 degrees, making it possible to view the display from almost any angle. Unlike standard TN panels, IPS displays give you remarkably crisp images with vivid colours, making them ideal not only for Photos, movies and web browsing, but also for professional applications that demand colour accuracy and consistent brightness at all times.

Ultra-narrow Border



The new Philips displays feature ultra-narrow borders which allow for minimal distractions and maximum viewing size. Especially suited for multi-display or tiling setups like gaming, graphic design and professional applications, the ultra-narrow border display gives you the feeling of using one large display.

MultiView technology

With the ultra-high resolution Philips MultiView display, you can now experience a world of connectivity. MultiView enables active dual connect and view so that you can work with multiple devices like a PC and notebook simultaneously, for complex multitasking.

HDMI ready



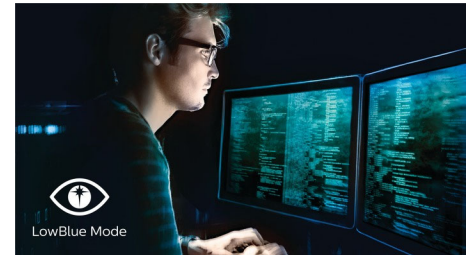
Enjoy crisp colourful images and audio with simple one-cable connection. A HDMI-ready device has all the required hardware to accept High-Definition Multimedia Interface (HDMI) input. A HDMI cable enables high-quality smooth digital video (up to 4K/UHD resolution at 60 Hz) and audio all transmitted over a single cable from a PC or any number of AV sources (including set-top boxes, DVD players, A/V receivers and video cameras).

Flicker-Free technology



Due to the way brightness is controlled on LED-backlit screens, some users experience flicker on their screen which causes eye fatigue. Philips Flicker-Free technology applies a new solution to regulate brightness and reduce flicker for more comfortable viewing.

LowBlue Mode



Studies have shown that just as ultra-violet rays can cause eye damage, shortwave-length blue light rays from LED displays can cause eye damage and affect vision over time. Developed for wellbeing, the Philips LowBlue Mode setting uses a smart software technology to reduce harmful shortwave blue light.

Eco-friendly materials

"Philips is committed to using sustainable, eco-friendly materials across its monitor range. All body plastic parts, metal chassis parts and packing materials use 100% recyclable materials. In some selected models, we use up to 65% post-consumer recycled plastics. Strict adherence to RoHS standards ensures a substantial reduction or elimination of toxic substances like lead, for example. Mercury content in monitors with a CCFL backlight has been reduced significantly, and has been eliminated completely in monitors with an LED backlight.



Specifications

Picture/Display

- LCD panel type: IPS technology
- Backlight type: W-LED system
- Panel Size: 27 inch/68.6 cm
- Display Screen Coating: Anti-Glare, 3H, Haze 25%
- Effective viewing area: 596.74 (H) x 335.66 (V)
- Aspect ratio: 16:9
- Optimum resolution: 3840 x 2160 @ 60 Hz
- Pixel Density: 163 PPI
- Response time (typical): 5 ms (Grey to Grey)*
- Brightness: 350 cd/m²
- Contrast ratio (typical): 1000:1
- SmartContrast: 20,000,000:1
- Pixel pitch: 0.155 x 0.155 mm
- Viewing angle: 178° (H)/178° (V), @ C/R > 10
- Flicker-free
- Picture enhancement: SmartImage game
- Display colours: Colour support 1.07 billion colours
- Colour gamut (typical): NTSC 91%*, sRGB 109%*
- Scanning Frequency: 30–83 kHz (H) / 59–61 Hz (V)
- LowBlue Mode
- sRGB

Connectivity

- Signal Input: DisplayPort 1.2, HDMI 2.0 x 2
- Sync Input: Separate Sync, Sync on Green
- Audio (In/Out): Audio out

Convenience

- MultiView: PIP/PBP mode, 2 x devices
- User convenience: Power On/Off, Menu, Brightness, Input, SmartImage Game
- OSD Languages: Brazil Portuguese, Czech, Dutch, English, Finnish, French, German, Greek, Hungarian, Italian, Japanese, Korean, Polish, Portuguese, Russian, Simplified Chinese, Spanish, Swedish, Traditional Chinese, Turkish, Ukrainian
- Other convenience: Kensington lock
- Plug and Play Compatibility: DDC/CI, Mac OS X, sRGB, Windows 10 / 8.1 / 8 / 7

Stand

- Tilt: -5/20 degree

Power

- On mode: 19.51 W (typ.) (EnergyStar test method)
- Standby mode: < 0.5 W (typ.)
- Off mode: < 0.3 W (typ.)
- Energy Label Class: G
- Power LED indicator: Operation - White, Standby mode - White (flashing)
- Power supply: External, 100–240 VAC, 50–60 Hz

Dimensions

- Product with stand (mm): 613 x 466 x 189 mm
- Product without stand (mm): 613 x 374 x 41 mm
- Packaging in mm (W x H x D): 660 x 523 x 135 mm

Weight

- Product with stand (kg): 4.84 kg
- Product without stand (kg): 4.23 kg
- Product with packaging (kg): 6.53 kg

Operating conditions

- Temperature range (operation): 0 to 40 °C
- Temperature range (storage): -20 to 60 °C
- Relative humidity: 20%-80 %
- Altitude: Operation: +12,000 ft (3658 m), Non-operation: +40,000 ft (12,192 m)
- MTBF: 50,000 hrs (excluding backlight) hour(s)

Sustainability

- Environmental and energy: EnergyStar 8.0, RoHS, Mercury Free, TCO Certified, WEEE
- Recyclable packaging material: 100 %

Compliance and standards

- Regulatory Approvals: CE Mark, FCC Class B, CU-EAC, TUV/ISO9241-307, BSMI, EPA, CCC, CECP, VCCI, ICES-003, cETLus, MEPS, CEL, CB, PSE, UKRAINIAN

Cabinet

- Colour: Black/Gunmetal
- Finish: Glossy

What's in the box?

- Monitor with stand
- Cables: HDMI cable, Power cable
- User Documentation



Issue date 2022-04-21

Version: 8.0.1

12 NC: 8670 001 56521
EAN: 87 12581 75366 5

© 2022 Koninklijke Philips N.V.
All Rights reserved.

Specifications are subject to change without notice.
Trademarks are the property of Koninklijke Philips N.V.
or their respective owners.

www.philips.com

* "IPS" word mark / trademark and related patents on technologies belong to their respective owners.

* Response time value equal to SmartResponse

* NTSC Area based on CIE 1976

* sRGB Area based on CIE1931

* The monitor may look different from feature images.