



Philips
LCD monitor with
PowerSensor

B Line
25" (63.4 cm)
1920 x 1200 (WUXGA)

252B9



Clear vision, beyond boundaries

Expand beyond boundaries with the new 16:10 frameless design Philips B Line monitor. Loaded with features to improve productivity and sustainability, this monitor takes it to the next level.

Designed for sustainability

- PowerSensor saves up to 70% energy costs
- Zero power consumption with 0 watt hard switch
- 100% Recycled packing material

Excellent performance

- 16:10 aspect ratio for more vertical screen height
- IPS technology for full colors and wide viewing angles

Designed for the way you work

- SmartErgoBase enables people-friendly ergonomic adjustments
- VESA mount allows for the perfect setup
- Less eye fatigue with Flicker-free technology
- LowBlue Mode for easy on-the-eyes productivity
- EasyRead mode for a paper-like reading experience



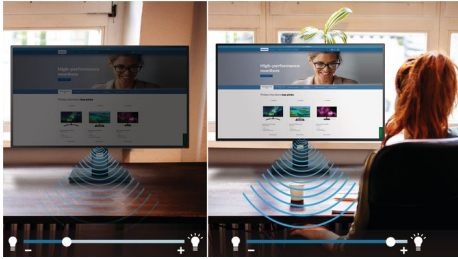
PHILIPS

LCD monitor with PowerSensor
B Line 25" (63.4 cm), 1920 x 1200 (WUXGA)

252B9/27

Highlights

PowerSensor

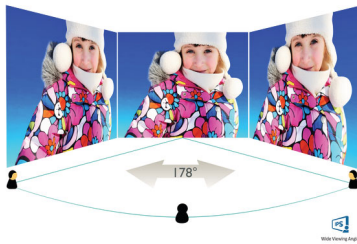


PowerSensor is a built-in 'people sensor' that transmits and receives harmless infrared signals to determine if user is present and automatically reduces monitor brightness when user steps away from the desk, cutting energy costs by up to 70 percent and prolonging monitor life.

Zero power consumption

At the flick of the 0 watt hard switch which is conveniently located at the back, you can completely cut-off your monitor from AC power. This results in zero power consumption reducing your carbon footprint even further

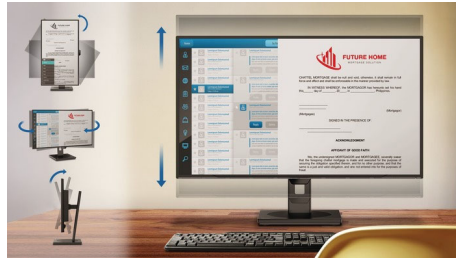
IPS technology



IPS displays use an advanced technology which gives you extra wide viewing angles of 178/178 degree, making it possible to view the display from almost any angle - even in 90 degree Pivot mode! Unlike standard TN panels, IPS displays gives you remarkably crisp images with vivid colors, making it ideal not only for Photos,

movies and web browsing, but also for professional applications which demand color accuracy and consistent brightness at all times.

SmartErgoBase



The SmartErgoBase is a monitor base that delivers ergonomic display comfort and provides cable management. The base's people-friendly height, swivel, tilt and rotation angle adjustments position the monitor for maximum comfort that can ease the physical strains of a long workday; cable management reduces cable clutter and keeps the workspace neat and professional.

VESA mount

VESA pattern guarantees compatibility hundreds of innovative mounting solutions.

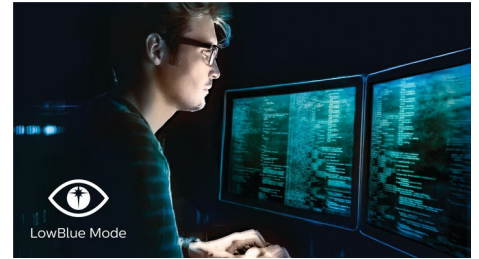
Flicker-free technology



Due to the way brightness is controlled on LED-backlit screens, some users experience flicker on their screen which causes eye fatigue. Philips

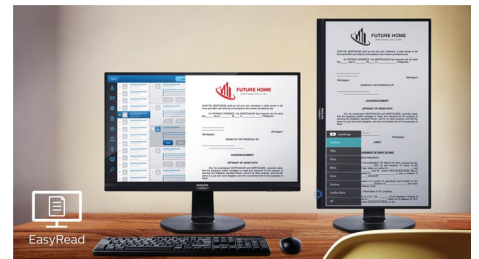
Flicker-free Technology applies a new solution to regulate brightness and reduce flicker for more comfortable viewing.

LowBlue Mode



Studies have shown that just as ultra-violet rays can cause eye damage, shortwave length blue light rays from LED displays can cause eye damage and affect vision over time. Developed for wellbeing, Philips LowBlue Mode setting uses a smart software technology to reduce harmful shortwave blue light.

EasyRead mode



EasyRead mode for a paper-like reading experience



Zero Power Switch



Specifications

Picture/Display

- LCD panel type: IPS technology
- Backlight type: W-LED system
- Panel Size: 25 inch / 63.4 cm
- Display Screen Coating: Anti-Glare, 3H, Haze 25%
- Effective viewing area: 535.5 (H) x 338.8 (V)
- Aspect ratio: 16:10
- Optimum resolution: 1920 x 1200 @ 60Hz
- Pixel Density: 91 PPI
- Response time (typical): 5 ms (Gray to Gray)*
- Brightness: 300 cd/m²
- Contrast ratio (typical): 1000:1
- SmartContrast: 50,000,000:1
- Pixel pitch: 0.279 x 0.282 mm
- Viewing angle: 178° (H) / 178° (V), @ C/R > 10
- Flicker-free
- Picture enhancement: SmartImage
- Color gamut (typical): NTSC 90%*, sRGB 107.5%*
- Display colors: 16.7M
- Scanning Frequency: 30 - 96 kHz (H) / 48 - 76 Hz (V)
- sRGB
- EasyRead
- LowBlue Mode

Connectivity

- Signal Input: VGA (Analog), DVI-D (digital, HDCP), DisplayPort 1.2, HDMI 1.4
- HDCP: HDCP 1.4 (HDMI/ DP)
- Sync Input: Separate Sync, Sync on Green
- USB: USB 3.1 x 1 (upstream), USB 3.1 x 4 (downstream with 1 fast charge B.C 1.2)
- Audio (In/Out): PC audio-in, Headphone out

Convenience

- Built-in Speakers: 2 W x 2
- User convenience: SmartImage, Input, Brightness, Menu, Power On/Off
- Control software: SmartControl
- OSD Languages: Brazil Portuguese, Czech, Dutch, English, Finnish, French, German, Greek, Hungarian, Italian, Japanese, Korean, Polish, Portuguese, Russian, Simplified Chinese, Spanish, Swedish, Traditional Chinese, Turkish, Ukrainian
- Other convenience: Kensington lock, VESA mount (100x100mm)
- Plug & Play Compatibility: DDC/CI, Mac OS X, sRGB, Windows 10 / 8.1 / 8 / 7

Stand

- Height adjustment: 150 mm
- Pivot: -/+ 90 degree
- Swivel: -/+ 175 degree
- Tilt: -5 ~ 30 degree

Power

- ECO mode: 12.3 W (typ.)
- On mode: 14.70 W (typ.) (EnergyStar test method)
- Standby mode: < 0.5 W (typ.)
- Off mode: Zero watts with Zero switch
- Power LED indicator: Operation - White, Standby mode- White (blinking)
- Power supply: Built-in, 100-240VAC, 50-60Hz

Dimensions

- Product with stand(max height): 546 x 541 x 206 mm
- Product with stand(max height): 21.5 x 21.3 x 8.1 inch
- Product without stand (mm): 546 x 367 x 49 mm
- Product without stand in inch: 21.5 x 14.4 x 1.9 inch
- Packaging in mm (WxHxD): 608 x 524 x 197 mm
- Packaging in inch (WxHxD): 23.9 x 20.6 x 7.8 inch

Weight

- Product with stand (kg): 5.09 kg
- Product with stand (lb): 11.20 lb
- Product without stand (kg): 3.50 kg
- Product without stand (lb): 7.70 lb
- Product with packaging (kg): 7.44 kg
- Product with packaging (lb): 16.37 lb

Operating conditions

- Temperature range (operation): 0°C to 40°C °C
- Temperature range (storage): -20°C to 60°C °C
- Relative humidity: 20%-80 %
- Altitude: Operation: +12,000ft (3,658m), Non-operation: +40,000ft (12,192m)
- MTBF (demonstrated): 70,000 hrs (excluded backlight)

Sustainability

- Environmental and energy: EnergyStar 8.0, PowerSensor, EPEAT*, TCO Certified, WEEE, RoHS
- Recyclable packaging material: 100 %
- Post consumer recycled plastic: 85%
- Specific Substances: PVC / BFR free housing,

Mercury free

Compliance and standards

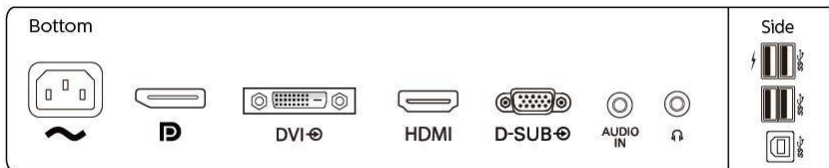
- Regulatory Approvals: CE Mark, FCC Class B, SEMKO, cETLus, CU-EAC, TUV Ergo, TUV/GS, EPA, ICES-003

Cabinet

- Front bezel: Black
- Rear cover: Black
- Foot: Black
- Finish: Texture

What's in the box?

- Monitor with stand
- Cables: D-Sub cable, HDMI cable, DP cable, USB-A to B cable, Audio cable, Power cable
- User Documentation



Issue date 2021-05-25

Version: 4.0.1

12 NC: 8670 001 56965
UPC: 6 09585 25241 7

© 2021 Koninklijke Philips N.V.
All Rights reserved.

Specifications are subject to change without notice.
Trademarks are the property of Koninklijke Philips N.V.
or their respective owners.

www.philips.com

* "IPS" word mark / trademark and related patents on technologies belong to their respective owners.

* Response time value equal to SmartResponse

* NTSC Area based on CIE1976

* sRGB Area based on CIE1931

* Fast charging complies with USB BC 1.2 standard

* EPEAT rating is valid only where Philips registers the product. Please visit <https://www.epeat.net/> for registration status in your country.

* The monitor may look different from feature images.