



Philips
LCD monitor with
SmoothTouch

B Line

24 (23.8" / 60.5 cm diag.)
1920 x 1080 (Full HD)

242B9T



Brilliant interactive display with SmoothTouch

A sturdy, water and dust resistant touch screen monitor for flexible use anywhere, with articulating stand to fit angles you need. Offering simple and intuitive use across applications, greatly boosts up productivity.

Brilliant interactive display

- SmoothTouch display for natural, fluid touch response
- Stylus for fluid and accurate performance with more control
- Monitor front surface meets IP65 for water & dust resistance
- 16:9 Full HD display for crisp detailed images
- SmartContrast for rich black details
- LowBlue Mode for easy on-the-eyes productivity
- Less eye fatigue with Flicker-free technology
- EasyRead mode for a paper-like reading experience

Easy to experience

- HDMI ensures universal digital connectivity
- USB 3.1 high speed data transfer
- DisplayPort connection for maximum visuals
- SmartStand with adjustable angles, boosts productivity
- VESA mount allows for flexibility

PHILIPS

LCD monitor with SmoothTouch
B Line 24 (23.8" / 60.5 cm diag.), 1920 x 1080 (Full HD)

242B9T/00

Highlights

SmoothTouch



This Philips display uses Projected capacitive 10 point touch technology for fluid response. You can fully utilize the new capabilities of touch based applications, and bring your older applications to life. Touch-type with 10 fingers, or play exciting interactive games with your friends. Collaborate with colleagues interactively at work or school environment and increase your productivity and efficiency.

Water and dust resistant



For less than perfect environments, you need a monitor that's designed to hold up to the splashes of water and dust that happen in the everyday world. Ingress Protection (IP) ratings defined in international standard IEC/EN 60529, are used to define levels of sealing effectiveness of electrical enclosures against intrusion from foreign bodies and moisture. This Philips display meets international the IP rating for water and dust resistance, it will hold up to water splashes and dust that happen in the everyday world.

16:9 Full HD display



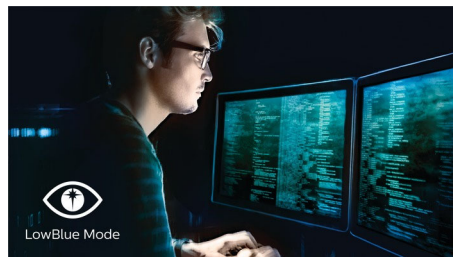
Picture quality matters. Regular displays deliver quality, but you expect more. This display features enhanced Full HD 1920 x 1080 resolution. With Full HD for crisp detail paired with high brightness, incredible contrast and realistic colors expect a true to life picture.

SmartContrast



SmartContrast is a Philips technology that analyzes the contents you are displaying, automatically adjusting colors and controlling backlight intensity to dynamically enhance contrast for the best digital images and videos or when playing games where dark hues are displayed. When Economy mode is selected, contrast is adjusted and backlighting fine-tuned for just-right display of everyday office applications and lower power consumption.

LowBlue Mode



Studies have shown that just as ultra-violet rays can cause eye damage, shortwave length blue

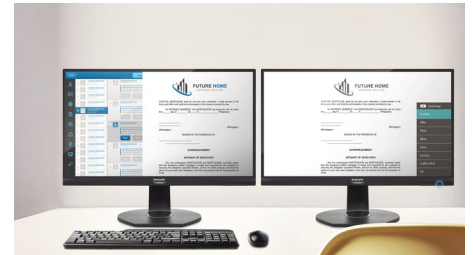
light rays from LED displays can cause eye damage and affect vision over time. Developed for wellbeing, Philips LowBlue Mode setting uses a smart software technology to reduce harmful shortwave blue light.

Flicker-free technology



Due to the way brightness is controlled on LED-backlit screens, some users experience flicker on their screen which causes eye fatigue. Philips Flicker-free Technology applies a new solution to regulate brightness and reduce flicker for more comfortable viewing.

EasyRead mode



EasyRead mode for a paper-like reading experience

SmartStand

Philips SmartStand allows for flexible adjustment of the screen. Its Z type structure with smooth tilt, height adjustment and folding capabilities enables you to use it in various ergonomic positions. You can set the stand in upright position for better touch control, or recline it backwards, making it easy for you to draw or annotate. It even allows you to put the screen almost flat on the table for some applications when required.



Specifications

Picture/Display

- LCD panel type: IPS technology
- Backlight type: W-LED system
- Panel Size: 23.8 inch / 60.5 cm
- Effective viewing area: 527 (H) x 296.5 (V)
- Aspect ratio: 16:9
- Optimum resolution: 1920 x 1080 @ 60Hz
- Pixel Density: 93 PPI
- Response time (typical): 5 ms (Gray to Gray)*
- Brightness: 250 cd/m²
- Contrast ratio (typical): 1000:1
- SmartContrast: 50,000,000:1
- Pixel pitch: 0.275 x 0.275 mm
- Viewing angle: 178° (H) / 178° (V), @ C/R > 10
- Flicker-free
- Picture enhancement: SmartImage
- Color gamut (typical): NTSC 72% (CIE 1931)
- Display colors: 16.7 M
- Scanning Frequency: 30 - 85 kHz (H) / 48 - 75 Hz (V)
- sRGB
- EasyRead
- LowBlue Mode

Touch

- Touch technology: Projected capacitive
- Touch points: 10 point
- Touch method: Stylus, Finger, Glove*
- Touch interface: USB
- Touch glass hardness: 7 H
- Touch glass coating: Glare
- Touch active area: 527 mm (H) x 296.5 mm (V)
- Operating system: Windows 10 / 8.1 / 8 / 7; Android 7.1 / 7.0 / 6.0 / 5.0 / 4.4; certain Linux versions*
- Palm rejection area: >= 30 x 30 mm
- Ingress protection: IP65 - front only
- Sealability: Touchscreen sealed to bezel; Touchscreen sealed to LCD

Connectivity

- Signal Input: VGA (Analog), DVI-D (digital, HDCP), DisplayPort 1.2, HDMI 1.4
- USB: USB 3.1x2 (1 w/fast charging)*
- Sync Input: Separate Sync, Sync on Green
- Audio (In/Out): PC audio-in, Headphone out

Convenience

- Built-in Speakers: 2 W x 2
- User convenience: SmartImage, Input, Brightness, Menu, Power On/Off

- Control software: SmartControl
- OSD Languages: Brazil Portuguese, Czech, Dutch, English, Finnish, French, German, Greek, Hungarian, Italian, Japanese, Korean, Polish, Portuguese, Russian, Simplified Chinese, Spanish, Swedish, Traditional Chinese, Turkish, Ukrainian
- Other convenience: Kensington lock, VESA mount (100x100mm)
- Plug & Play Compatibility: DDC/CI, sRGB, Windows 10 / 8.1 / 8 / 7

Stand

- Tilt: -5 ~ 90 degree
- Folding angle: 0 ~ 70 degree
- Height adjustment: 184 (Horizontal), 75 (Vertical) mm

Power

- ECO mode: 11.5 W (typ.)
- On mode: 15.68 W (typ.) (EnergyStar test method)
- Standby mode: < 0.5 W (typ.)
- Off mode: < 0.3 W (typ.)
- Energy Label Class: E
- Power LED indicator: Operation - White, Standby mode- White (blinking)
- Power supply: External, 100-240VAC, 50-60Hz

Dimensions

- Product with stand(max height): 554 x 413 x 227 mm
- Product without stand (mm): 554 x 338 x 50 mm
- Packaging in mm (WxHxD): 620 x 433 x 168 mm

Weight

- Product with stand (kg): 8.15 kg
- Product without stand (kg): 4.86 kg
- Product with packaging (kg): 11.06 kg

Operating conditions

- Temperature range (operation): 0°C to 40°C °C
- Temperature range (storage): -20°C to 60°C °C
- Relative humidity: 20%-80 %
- Altitude: Operation: +12,000ft (3,658m), Non-operation: +40,000ft (12,192m)
- MTBF (demonstrated): 70,000 hrs (excluded backlight)

Sustainability

- Environmental and energy: EnergyStar 8.0, EPEAT*, TCO Certified Edge, RoHS, WEEE

- Recyclable packaging material: 100 %
- Specific Substances: PVC / BFR free housing, Mercury free

Compliance and standards

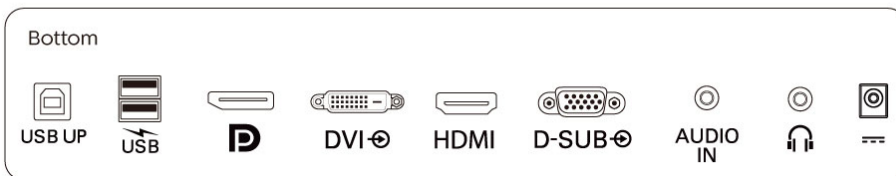
- Regulatory Approvals: CB, CE Mark, FCC Class B, SEMKO, UKRAINIAN, ICES-003, TUV/GS, TUV Ergo, CU-EAC, EAEU RoHS, cETLus

Cabinet

- Front bezel: Black
- Rear cover: Black
- Foot: Black
- Finish: Texture

What's in the box?

- Monitor with stand
- Cables: D-Sub cable, HDMI cable, DP cable, USB-A to B cable, Audio cable, Power cable
- User Documentation
- Accessory: Stylus touch pen x 1 (black)



Issue date 2021-06-13

Version: 13.1.1

12 NC: 8670 001 57934
EAN: 87 12581 75680 2

© 2021 Koninklijke Philips N.V.
All Rights reserved.

Specifications are subject to change without notice.
Trademarks are the property of Koninklijke Philips N.V.
or their respective owners.

www.philips.com

* "IPS" word mark / trademark and related patents on technologies belong to their respective owners.
* Glove material and thickness: Nitrile (0.15 mm), Cotton (0.31 mm), CPE (0.03 mm), PVC (0.12 mm)
* Response time value equal to SmartResponse
* Please refer to "SmoothTouch" in user manual for more details of operating systems support in touch function.
* Fast charging complies with USB BC 1.2 standard
* EPEAT rating is valid only where Philips registers the product. Please visit <https://www.epeat.net/> for registration status in your country.
* The monitor may look different from feature images.