



Please check out the website below for more product information.
www.philips.com/signagesolutions-support



IOBDL305 IT



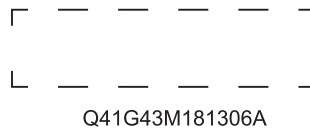
Quick
Start

© 2016 Koninklijke Philips N.V. All rights reserved.

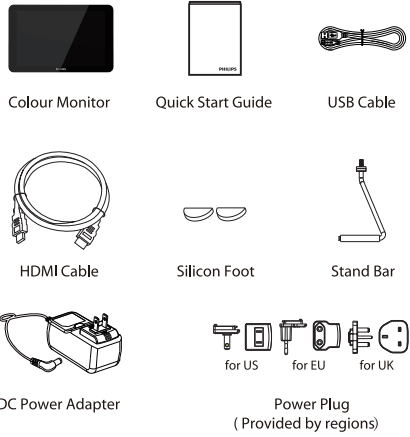
Philips and the Philips Shield Emblem are registered trademarks of Koninklijke Philips N.V. and are used under license from Koninklijke Philips N.V.

Specifications are subject to change without notice.

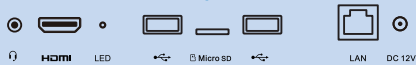
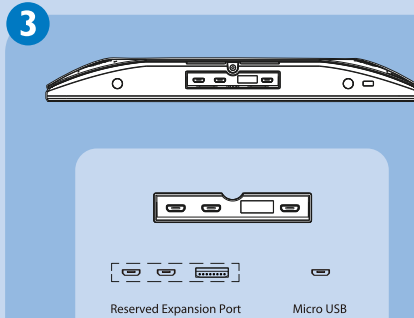
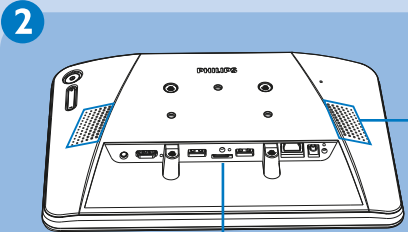
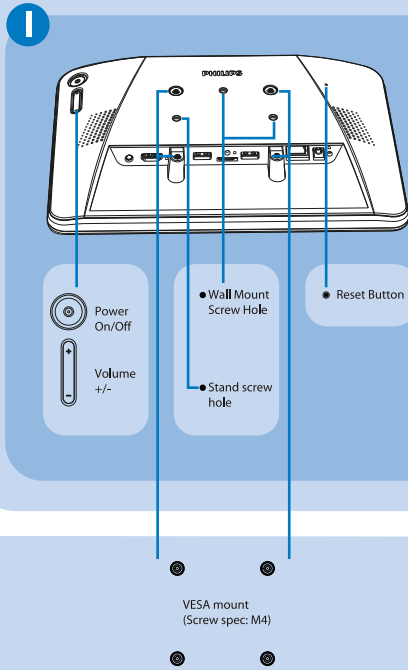
Version: V2.00 2016-11-21



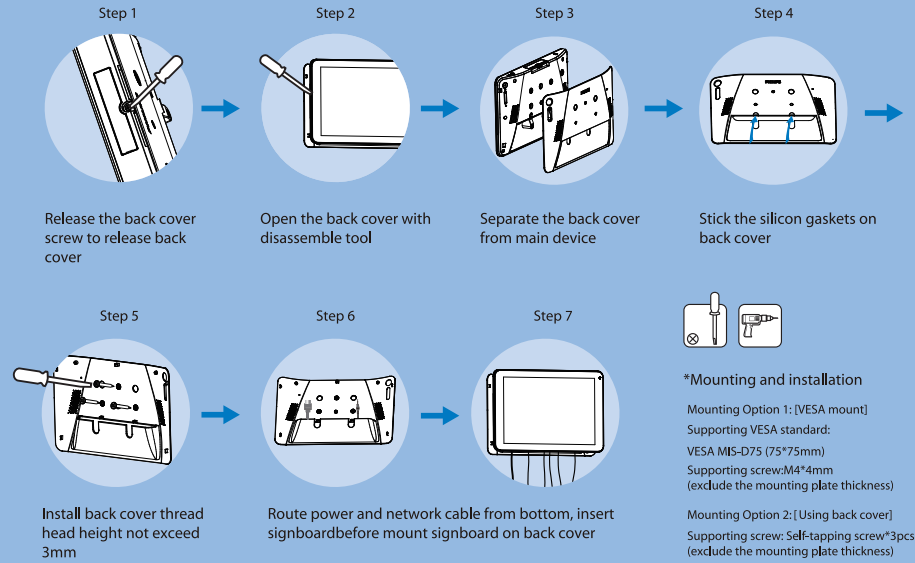
PHILIPS



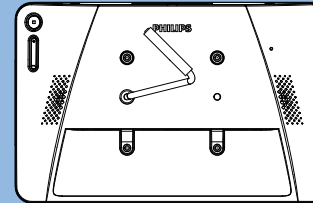
* Differences according to regions.
Display design and accessories may differ from those illustrated above.



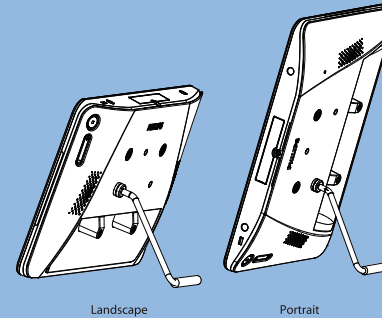
4



5



* Simply screw the supplied table stand onto the stand screw hole.



CARE AND WARNING

WARNING: Changes or modifications to this unit not expressly approved by the party responsible for compliance could void the user's authority to operate the equipment.

NOTE: This equipment has been tested and found to comply with the limits for a Class A digital device, pursuant to Part 15 of the FCC Rules. These limits are designed to provide reasonable protection against harmful interference in a residential installation. This equipment generates, uses and can radiate radio frequency energy and, if not installed and used in accordance with the instructions, may cause harmful interference to radio communications.

However, there is no guarantee that interference will not occur in a particular installation. If this equipment does cause harmful interference to radio or television reception, which can be determined by turning the equipment off and on, the user is encouraged to try to correct the interference by one or more of the following measures:

- Reorient or relocate the receiving antenna.
- Increase the separation between the equipment and receiver.
- Connect the equipment into an outlet on a circuit different from that to which the receiver is connected.
- Consult the dealer or an experienced radio/panel PC technician for help.

This device complies with Part 15 of the FCC Rules. Operation is subject to the following two conditions:

- (1) this device may not cause harmful interference, and
- (2) this device must accept any interference received, including interference that may cause undesired operation.

CAN ICES-3 (A)/NMB-3(A)
This device complies with Industry Canada licence-exempt RSS standard(s). Operation is subject to the following two conditions:
(1) this device may not cause interference, and (2) this device must accept any interference, including interference that may cause undesired operation of the device.
Le présent appareil est conforme aux CNR d'Industrie Canada applicables aux appareils radio exempts de licence. L'exploitation est autorisée aux deux conditions suivantes: (1) l'appareil ne doit pas produire de brouillage, et (2) l'utilisateur de l'appareil doit accepter tout brouillage radioélectrique subi, même si le brouillage est susceptible d'en compromettre le fonctionnement.

Recycling symbol: Correct disposal of this product. This marking indicates that this product should not be disposed with other household wastes throughout the EU. To prevent possible harm to the environment or human health from uncontrolled waste disposal, recycle it responsibly to promote the sustainable reuse of material resources. To return your used device, please use the return and collection systems or contact the retailer where the product was purchased. They can take this product for environmental safe recycling.

FCC, IC & CE RF Radiation Exposure Statement Caution: To maintain compliance with the FCC, IC & CE's RF exposure guidelines, place the product at least 20cm from near by persons.
Le présent document IC, FCC, brouillage fixe un rayonnement contrôlée. Installation et mise en œuvre de ce matériel devrait avec échangeur distance minimale entre 20cm & ton corps.

The suitable temperature for the Colour Monitor and accessories is 0°C-45°C.
Adaptor with ferrite must be used with this equipment to ensure compliance with the Class A FCC limits.

Power Adapter Information:
Model No.: KSA5B0241200150D5
INPUT: 100-240V~50/60Hz 0.6A
OUTPUT: 12V=1.5A